

PUBLIC ONSITE

WEBCAST AUCTION

GEAR CUTTING & MACHINE SHOP FACILITY

BID LIVE
ONSITE

AUCTION: TUESDAY, AUGUST 15 AT 10:00 AM CDT
INSPECTION: MONDAY, AUGUST 14 FROM 8:00 AM TO 3:00 PM CDT
AND MORNING OF SALE FROM 8:00 TO 10:00 AM CDT
LOCATION: 4770 IBERIA AVENUE, DALLAS, TX

BID LIVE
ONLINE



GOULD & EBERHARDT 48 GEAR HOBBER

*Machine Tool & Repair
Company*

FEATURING

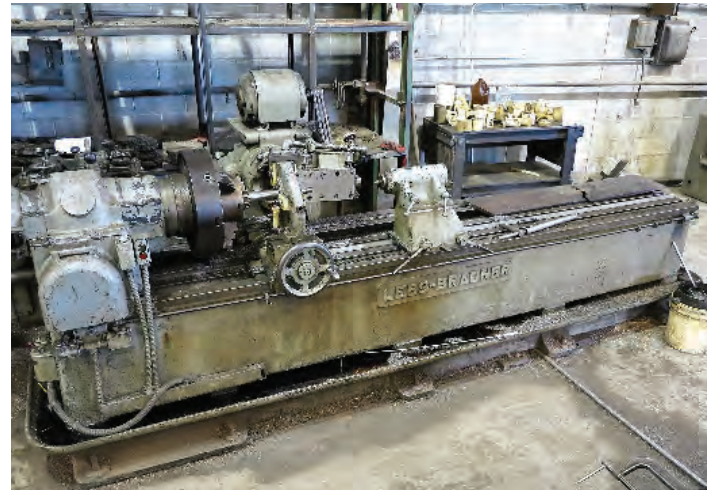
**FELLOWS SHAPERS, BARBER COLEMAN,
GLEASON & GOULD/EBERHARDT
HOBBERS, CNC THREADMILLS,
HURCO VERTICAL MACHINING CENTER,
MANUAL MACHINE TOOLS,
GEAR TOOLING, PAINT BOOTHS,
FORKLIFTS, PICK-UP TRUCK, TRAILER,
GEN-SET, JIBS & MORE**



FELLOWS 4A GS SHAPER



FELLOWS 36 SHAPER



LEES BRANDER THREAD AND WORM MILLING MACHINE

 **MRI AUCTIONS**

MACHINERY RESOURCES INTERNATIONAL, INC.

www.mriauctions.com

roy@mriauctions.com | 818.346.7985

Roy Gamityan, Auctioneer

SALE IN
CONJUNCTION
WITH:



**JOHN HENRY
AUCTIONS**

817-992-3933

PUBLIC ONSITE

WEBCAST AUCTION

BID LIVE ONSITE

**GEAR CUTTING &
MACHINE SHOP FACILITY**

BID LIVE ONLINE

*Machine Tool & Repair
Company*

WEBCAST AUCTION:

TUESDAY, AUGUST 15 AT 10:00 AM CDT

INSPECTION:

**MONDAY, AUGUST 14 FROM 8:00 AM TO 3:00 PM CDT
AND MORNING OF SALE FROM 8:00 TO 10:00 AM CDT**

LOCATION:

4770 IBERIA AVENUE, DALLAS, TX

TERMS OF PAYMENT:

**CASH, CASHIER'S CHECK, BUSINESS CHECK WITH
BANK LETTER OF GUARANTEE, BANK WIRE
TRANSFER. FULL PAYMENT MUST BE MADE NO
LATER THAN 24 HOURS OF WINNING BID.**

REMOVAL:

**ALL ITEMS MUST BE REMOVED NO LATER THAN
TUESDAY, AUGUST 22**

BUYER'S PREMIUM:

**15% FOR ALL ONSITE PURCHASES AND
18% FOR ALL ONLINE PURCHASES**

ONLINE BIDDING PROVIDED BY

BidSpotter.com

For Complete Information Please Visit:

www.mriauctions.com

Email: roy@mriauctions.com or Call: 818-346-7985

MRI AUCTIONS

MACHINERY RESOURCES INTERNATIONAL, INC.

www.mriauctions.com

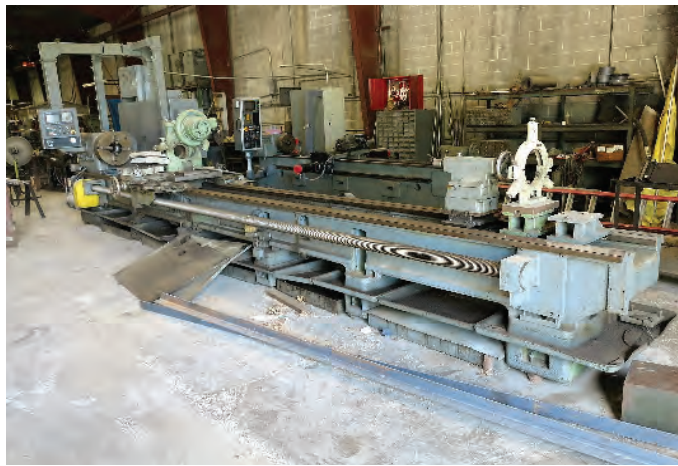
1650 Voyager Ave., Ste. A, Simi Valley CA, 93063

roy@mriauctions.com | 818.346.7985

Roy Gamityan, Auctioneer

Texas Auctioneer Lic.# 17677

THREADMILLS



ALLEN BRADLEY CNC CONTROL, 5" HOLE THRU, 18" 4 JAW CHUCK, 10" X 240" CC



WANDERER, FANUC O-M CNC CONTROL, 3" HOLE THRU, 12" 3 JAW CHUCK, 6" X 120" CC

**GERMAN MADE, ALLEN
BRADLEY CNC CONTROL,
5" HOLE THRU, 18"
4 JAW CHUCK, 10" X
240" CC; WANDERER,
FANUC O-M CNC
CONTROL, 3" HOLE
THRU, 12" 3 JAW
CHUCK, 6" X 120" CC;
LEES BRANDER
THREAD AND
WORM MILLING
MACHINE, TYPE HT,
MAXIMUM SWING
OVER CARRIAGE: 20"
MAXIMUM DISTANCE
BETWEEN CENTERS:
138" WORK SPINDLE
THRU-BORE: 6"
MAXIMUM CUTTER
DIAMETER: 7",
S/N HT1265**

**MACHINE
SHOP
EQUIPMENT**



CINCINNATI HYPRO PLANNER



MONARCH LATHE



TUDA HYSAN ENGINE GAP BED LATHE



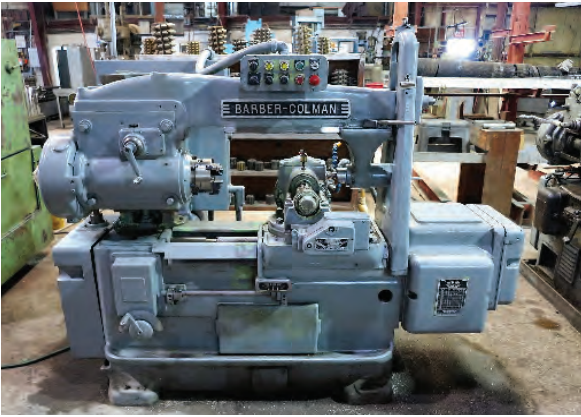
NORTON GRINDER

**HURCO CNC VERTICAL MACHINING CENTER, MODEL
MD-1, XYZ TRAVELS: 30" X 15" X 16",
ULTIMATIC CNC CONTROL, 40 TAPER SPINDLE, 6500
RPM, S/N 8001104A; CINCINNATI HYPRO PLANNER,
192" X 56" TABLE LENGTH S/N 110; TUDA HYSAN
ENGINE LATHE, 24" X 120" CC; TUDA HYSAN ENGINE
GAP BED LATHE, 20" X 80" CC; MONARCH LATHE,
1087" BED, 2" HOLE THRU, 15" 3 JAW CHUCK;
THOMPSON SURFACE GRINDER, 6" X 24" CHUCK;
NORTON GRINDER, MODEL 75H**



HURCO CNC VERTICAL MACHINING CENTER

GEAR MACHINERY



BARBER-COLEMAN 16-16 GEAR HOBBER



FELLOWS 36 SHAPER



FELLOWS 36 SHAPER

GOULD & EBERHARDT 48 GEAR HOBBER, 48", S/N 7280A1; GOULD & EBERHARDT 24H GEAR HOBBER, 24", S/N 6720A13; GOULD & EBERHARDT 16 GEAR HOBBER, 16", S/N 1073; BARBER-COLEMAN 16-36 GEAR HOBBER, 16" X 36", 10" CHUCK, 4" BORE, S/N 2396; BARBER-COLEMAN 16-16 GEAR HOBBER, 16" X 16", 6" CHUCK, 2" BORE, S/N 3626; BARBER-COLEMAN 6-10 GEAR HOBBER, 16" X 10", 8" CHUCK, 2" BORE S/N 4576; BARBER-COLEMAN 14-15 GEAR HOBBER, 14" X 15", BORE S/N 502; BARBER-COLEMAN 14-15 GEAR HOBBER, 14" X 15", S/N 615; GLEASON 12 HOBBER, 12", S/N 50242; FELLOWS 4A GS SHAPER, 16" X 16", 5" CHUCK, S/N 34254; FELLOWS 36 SHAPER, 12" CHUCK, 2" BORE S/N 27077; FELLOWS 36 SHAPER, S/N 27363; FELLOWS 615A SHAPER, 16" TABLE, S/N 18738; FELLOWS 615A SHAPER, S/N 21318; FELLOWS 7125 SHAPER, S/N 17075; FELLOWS 75 SHAPER, S/N 20890; BARBER COLEMAN HOB GRINDER, S/N 380



BARBER-COLEMAN 14-15 GEAR HOBBER



GOULD & EBERHARDT 24H GEAR HOBBER



FELLOWS 615A SHAPER



FELLOWS 7125A SHAPER



BARBER COLEMAN HOB GRINDER



GOULD & EBERHARDT 16 GEAR HOBBER



PAINT BOOTH, APPROX. 31' X 14' X 9'



PAINT BOOTH, APPROX. 40' X 16'



BARBER-COLEMAN 16-36 GEAR HOBBER



GLEASON 12 HOBBER

PUBLIC ONSITE

WEBCAST AUCTION

GEAR CUTTING & MACHINE SHOP FACILITY

BID LIVE
ONSITE

AUCTION: TUESDAY, AUGUST 15 AT 10:00 AM CDT
INSPECTION: MONDAY, AUGUST 14 FROM 8:00 AM TO 3:00 PM CDT
AND MORNING OF SALE FROM 8:00 TO 10:00 AM CDT
LOCATION: 4770 IBERIA AVENUE, DALLAS, TX

BID LIVE
ONLINE



PATROIT EQUIPMENT 20' TRAILER

*Machine Tool & Repair
Company*



DATSUN 6000 LB CAPACITY FORKLIFT



2008

2008 CHEVY 2500HD PICK UP TRUCK



TOYOTA 4500 LB CAPACITY FORKLIFT



10F7

1 TON JIB CRANE



2 TON JIB CRANE



HYSTER 4000 LB FORKLIFT



TORO Z MASTER LAWN MOWER



CATERPILLAR GEN-SET WARREN POWER SYSTEM



KOMATSU 2000 LB CAPACITY