

PUBLIC

ONLINE AUCTION

NEW & USED FABRICATING AND CHIPMAKING MACHINES

BIDDING STARTS: THURSDAY, OCTOBER 12TH.
BIDDING ENDS: TUESDAY OCTOBER 31ST AT 10:00 AM PDT.
INSPECTION DATES: OCTOBER 1 - 31ST.

INSPECT LOTS FOR SALE:

**9310 GARVEY AVENUE
SOUTH EL MONTE, CA 91733**

**10807 RUSH STREET
SOUTH EL MONTE, CA 91733**



**PRESS BRAKES, SHEARS, PRESSES, SAWS, LATHES, MILLS,
WELDERS, GRINDERS, CRANES, FORKLIFTS AND MORE.**



MACHINERY RESOURCES INTERNATIONAL, INC.

www.mriauctions.com

roy@mriauctions.com | 818.346.7985

ROY GAMITYAN, AUCTIONEER



WWW.STERLINGMACHINERY.COM

PHONE: (626) 444-0311

FAX: (626) 443-9588

EMAIL: ADAM@STERLINGMACHINERY.COM

PUBLIC ONLINE AUCTION



BRAND NEW 36" DOALL BANDSAW



BRAND NEW MILLING MACHINE ATRUMP



BRAND NEW LATHE NEVER USED



12" X 24" OKAMOTO CNC GRINDER



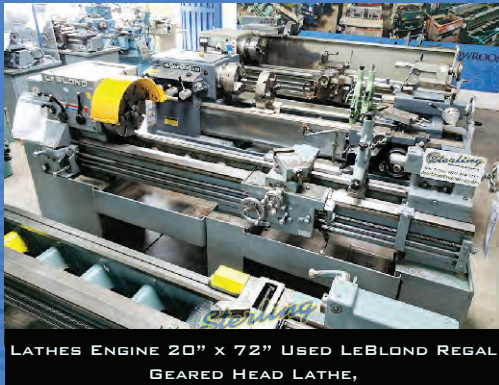
USED CINCINNATI PRESS BRAKE



200 TON X 4" USED FER-RACUTE DBI PUNCH PRESS



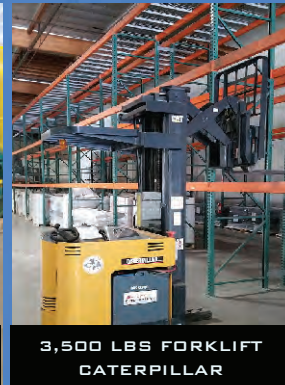
WELDERS SPOT (ROCKER ARM & PRESS TYPE) 75 KVA X 42"



LATHES ENGINE 20" X 72" USED LeBLOND REGAL BEARED HEAD LATHE,



1/4" X 10' USED HEAVY DUTY MECHANICAL INITIAL PINCH PLATE ROLL



3,500 LBS FORKLIFT CATERPILLAR



150 TON X 4" STRAIGHT SIDE PRESS



2 AVAILABLE

45 TON X 5' ATLANTIC HYDRAULIC PRESS BRAKE



1/4" X 8' STAMCO



10" X 23" YAM UNIVERSAL CYLINDRICAL GRINDER



FORKLIFT FROM 3,500 - 15,000 LBS



GRINDERS ROTARY SURFACE 16" X 80" USED SNOW VERTICAL SPINDLE SURFACE GRINDER

TERMS:

PAYMENT BY CASHIER'S CHECK, BUSINESS CHECK WITH BANK LETTER OF GUARANTEE OR WIRE TRANSFER

ANY QUESTIONS?

CONTACT US AT (626) 444-0311
EMAIL US: ADAM@STERLINGMACHINERY.COM

FINANCING:

PRE-APPROVAL UP TO \$150,000 INSTANTLY! *OAC EMAIL TO APPLY
FINANCING@STERLINGMACHINERY.COM

BUYER'S PREMIUM 18% FOR ALL PURCHASES

**LIST YOUR MACHINERY IN OUR NATIONWIDE CONSIGNMENT AUCTIONS FOR FREE
CALL FOR DETAILS (626) 444-0311**

ONLINE BIDDING PROVIDED BY

BidSpotter.com



- SELL FROM YOUR LOCATION
- NO CHARGE FOR LISTING
- GLOBAL MARKETING