

**ALEX  
LYON  
& SON**

**SALES MANAGERS  
& AUCTIONEERS**

**BIG ENOUGH FOR  
THE INDUSTRY LEADERS,  
YET PERSONAL ENOUGH  
FOR AMERICA'S FARMER.**

**AMERICA'S  
AUCTION COMPANY**

**AMARILLO, TEXAS - THURSDAY, OCTOBER 27<sup>TH</sup> AT 9:30 AM**

**SECURED CREDITORS AUCTION - COMPLETE LIQUIDATION  
B&B SOLVENT, LLC**

**CONSTRUCTION, AGGREGATE EQUIPMENT, TRUCK TRACTORS, DUMP TRUCKS,  
BELLY DUMP TRAILERS, PICKUPS & SERVICE TRUCKS**



**KISSIMMEE (WINTER GARDEN), FLORIDA  
FRIDAY, OCTOBER 28<sup>TH</sup> AT 10:00 AM**

**RENTAL FLEET CONSTRUCTION, AERIALS,  
FORKLIFT, TRUCK & TRAILER AUCTION**



**WEST PALM BEACH, FLORIDA**

**SATURDAY, OCTOBER 29<sup>TH</sup> AT 10:00 AM**

**ACQUISITION AUCTION - DISCOUNT EQUIPMENT**

**RENTAL FLEET CONSTRUCTION,  
AERIAL LIFTS, SUPPORT,  
ATTACHMENT AUCTION**



**ALEX LYON & SON SALES MANAGERS & AUCTIONEERS, INC.**

**7697 ROUTE 31, PO BOX 610, BRIDGEPORT, NY 13030 315-633-2944 FAX: 315-633-8010 LYONAUCTION.COM**

# AMERICA'S AUCTION COMPANY

**AMARILLO, TEXAS - THURSDAY, OCTOBER 27<sup>TH</sup> AT 9:30 AM**

**ADDRESS:** 1956 County Road DD, White Deer, Texas 79097. **NOTE:** B&B Solvent is liquidating its Construction Aggregate Equipment along with its Trucks, Trailers, and Support Equipment that has been used in daily operations. **SALE SITE PHONE:** (262) 903-6269 Chad. **TERMS & CONDITIONS:** "Cash or Company Check" accompanied by current "Bank Letter of Guarantee", made payable to Alex Lyon & Son. Everything Sells "AS IS, WHERE IS." *The following charges will apply on all purchases:* For all items purchased, a 10% administration fee will be assessed when paying with cash or good check. (The standard fee of 13% will be assessed when paying with credit card).



**FOR BID ONLINE  
TECHNICAL ASSISTANCE  
CALL (919) 595-2907**

## 3 IMPACT CRUSHERS

**2011 KPI-JCI FT4250** SN411324-411327 Cat C13 diesel engine, 440hp, horizontal shaft impactor crusher, 50in. x 15ft. vibrating pan feeder, 48in. x 40ft. under crusher conveyor, 71-2D612 6ft. x 12ft. 2-deck screen, side conveyor, magnet, 24in. Tracks.



**2008 KPI-JCI FT4250** SN408241-408244 Cummins diesel engine, horizontal shaft impactor crusher, 50in. x 15ft. vibrating pan feeder, 48in. x 40ft. under crusher conveyor, 71-1D612 6ft. x 12ft. single deck screen, side conveyor, magnet, 24in. Tracks.



**2011 KPI-JCI 1500EV** SN411436 electric powered, vertical shaft impactor, 8.5in feed tube, 150 tons per hour, mounted on stand

## 3 SCREENING PLANTS



**2008 ASTEC FNG 2516 KT** SN83026 John Deere diesel engine, 5ft. x 16ft. 2-deck screen, 48in. rear discharge belt, (2) 30in. side discharge belts, 24in. Tracks.



**ASTEC FNG2512K** SN42265 John Deere diesel, 5ft. x 12ft. 2 deck screen, (2) folding side conveyors, rear discharge conveyor, vibrating feeder, towable, tandem axle. **16FT. SCREENING PLANT** SNCR5160428 5ft. x 16ft. 2-deck screen.

## JAW CRUSHERS



**2011 KPI-JCI FT2650** SN410911-410913 Cat C9 diesel engine, 300hp, jaw crusher, 50in. x 18ft. vibrating feeder, 48in. discharge belt, hydraulic folding discharge conveyor, 24in. tracks.



**2008 KPI-JCI FT2650** SN408780-408782 Cummins diesel engine, 245hp, jaw crusher, vibrating feeder, 48in. discharge belt, 24in. Tracks.

## 3 CONVEYORS & STACKERS



**KPI 13-3080** SN406339 electric powered, 30in. belt, 80ft. long, single axle chassis.



**KPI-JCI 11-3060** SN408361 hydraulic driven, 30in. belt, 60ft. long, single axle chassis.

**KPI-JCI 11-3060** SN407247 hydraulic driven, 30in. belt, 60ft. long, single axle chassis.

## ARTICULATED HAUL TRUCKS



**2005 CAT 730** SNB1M00200 SERIES 6x6, Cat diesel engine, EROPS, air, 30 ton capacity, 23.5R25 rubber.

**2005 CAT 730** SNB1M00100 SERIES 6x6, Cat diesel engine, EROPS, air, 30 ton capacity, 23.5R25 rubber

## 3 HYDRAULIC EXCAVATORS



**2006 CAT 345CL** SNPJW00700 SERIES Cat diesel engine, Cab, air, reach boom, 10ft. Stick, 36in. Pads, 54in. Digging bucket, long undercarriage.

**JOHN DEERE 450LC** SNFF0450X090483 John Deere diesel engine, Cab, reach boom, 12ft. Stick, 34in. Pads, 54in. Digging bucket, long undercarriage. Parts Unit.

**LYON**





**KOBELCO SK-210LC** SNYQ07-U0687 diesel engine, Cab, 10ft. Stick, auxiliary hydraulics, 32in. Pads, 54in. Digging bucket, long undercarriage.

## 7 MOTOR GRADERS

**2006 CAT 140HVHP PLUS** SNCCA02200 SERIES Cat diesel engine, EROPS, air, Variable Horse Power, 14ft. Moldboard, hydraulic sideshift, TIP, rear ripper, 14.00-24 rubber.

**CAT 140HVHP** SN2ZK07300 SERIES Cat diesel engine, EROPS, air, Variable Horse Power, 14ft. Moldboard, hydraulic sideshift, TIP, push block, rear ripper, 14.00-24 rubber.



**CAT 140H** SNCCA00300 SERIES Cat 3176 diesel engine, EROPS, air, 14ft. Moldboard, hydraulic sideshift, TIP, push block, rear ripper, 17.5R25 rubber.



**CAT 140H** SN2ZK03500 SERIES Cat diesel engine, EROPS, air, 14ft. Moldboard, hydraulic sideshift, TIP control, push block, rear ripper, 14.00-25 rubber. Parts Unit.



**2006 JOHN DEERE 772D** SNDW772DX607135 6x6, John Deere diesel engine, EROPS, air, 14ft. Moldboard, hydraulic sideshift, TIP, push block, rear ripper, 17.5R25 rubber.

**2005 JOHN DEERE 770D** SNDW770DX597057 John Deere diesel engine, EROPS, air, 14ft. Moldboard, hydraulic sideshift, TIP, push block, rear ripper, 17.5R25 rubber.



**JOHN DEERE 670B** SNDW670BX515283 John Deere diesel engine, EROPS, heat, 12ft. Moldboard, hydraulic sideshift, TIP, 14.00 x 24 rubber.

## MOTORSRAPERS



**CAT 623E** SN6CB00600 SERIES Cat 3406 diesel engine, 383hp, EROPS, air, self elevating, 23 yard capacity, 29.5-29 rubber.



**CAT 615C SERIES II** SN9XG01300 SERIES Cat 3306 diesel engine, 279hp, EROPS, air, self loading, 17 yard capacity, 29.5-25 rubber.

## 14 RUBBER TIRED LOADERS



**2006 CAT 980H** SNJMS00700 SERIES Cat diesel engine, EROPS, air, ride control, Loadrite scale with printer, 7.25 yard GP bucket, 29.5R25 rubber.



**CAT 980G** SN2KR04500 SERIES Cat diesel engine, EROPS, air, ride control, 7.25 yard GP bucket, 29.5R25 rubber.

**2005 CAT 950G** SNAXR00300 SERIES Cat diesel engine, EROPS, air, ride control, GP bucket, 23.5R25 rubber.

**CAT 936** SN45Z00700 SERIES Cat diesel engine, EROPS, heat, GP bucket, 23.5R25 rubber.



**2007 JOHN DEERE 744J** SNDW744JX611185 John Deere diesel engine, EROPS, air, ride control, Loadrite scale with printer, 5.25 yard GP bucket, 26.5x25 rubber.



**JOHN DEERE 744H** SNDW744HX567548 John Deere diesel, EROPS, air, ride control, GP bucket, 26.5R25 rubber.



**2007 JOHN DEERE 724J** SNDW724JX614004 John Deere diesel engine, EROPS, air, ride control, GP bucket, 23.5R25 rubber.

**2007 JOHN DEERE 724J** SNDW724JX611583 John Deere diesel engine, EROPS, air, ride control, GP bucket, 26.5R25 rubber, Parts Unit.



**2007 JOHN DEERE 644J** SNDW644JX615190 John Deere diesel engine, EROPS, air, ride control, Loadrite scale, 4.25 yard GP bucket, 23.5R25 rubber.



## 4 CRAWLER TRACTORS



**JOHN DEERE 644H** SNDW644HX583447 John Deere diesel engine, EROPS, air, ride control, GP bucket, 23.5R25 rubber.



**JOHN DEERE 644H** SNDW644HX583466 John Deere diesel engine, EROPS, air, ride control, GP bucket, 23.5R25 rubber.



**JOHN DEERE 644H** SNDW644HX583450 John Deere diesel engine, EROPS, air, ride control, load scale with printer, GP bucket, 23.5R25 rubber.



**2006 JOHN DEERE 644J** SNDW644JX607076 John Deere diesel engine, EROPS, air, ride control, Loadrite scale, 4.25 yard GP bucket, 23.5R25 rubber.



**2007 KOMATSU WA480** SNA38030 Komatsu diesel engine, EROPS, air, ride control, GP bucket, 26.5R25 rubber.



**2006 JOHN DEERE 850J** SNT0850JX124556 John Deere diesel engine, EROPS, air, SU blade, rear ripper, 22in. Pads.



**2007 JOHN DEERE 550JLT** SNT0550JX137333 John Deere diesel engine, EROPS, air, sweeps, 6 way blade, 18in. Pads, rear ripper, long track frame.



**2006 JOHN DEERE 550JLT** SNT0550JX128940 John Deere diesel engine, EROPS, air, sweeps, 6 way blade, 18in. Pads, rear ripper, long track frame.



**CAT D8N** SN9TC04200 SERIES Cat diesel engine, EROPS, air, SU blade, Multi-shank rear ripper, 24in. Pads.

## 5 TRACTOR LOADER BACKHOES

**JOHN DEERE 710B** SNT0710BD745923 John Deere diesel engine, EROPS, heat, GP front bucket, 24in. Rear digging bucket.



**2006 JOHN DEERE 310G** SNT0310GX959147 4x4, John Deere diesel engine, EROPS, air, pilot controls, extendahoe, 1.12 yard GP bucket, 24in. Rear digging bucket.

**JOHN DEERE 310D** SNT0310DB824156 John Deere diesel engine, EROPS, air, 4-in-1 front bucket, 24in. Rear digging bucket.



**JOHN DEERE 310D** SNT0310DB823522 John Deere diesel engine, EROPS, air, extendahoe, GP front bucket, 24in. Rear digging bucket.

**JOHN DEERE 310D** SNT0310DG803716 4x4, John Deere diesel engine, EROPS, air, extendahoe, rear auxiliary hydraulics, 4-in-1 front bucket, 24in. Rear digging bucket.

## CURB MACHINE



**POWER CURBER 5700B** SN57169628 diesel engine, 3-track drive.

## SOIL STABILIZER



**2006 CAT RM-500** SNASW00129 Cat C15 ACERT diesel engine, 540hp, Sliding cab, air, Universal Rotor, 96in. width, 16in. cutting depth, solution pump, all wheel drive, 26.5 x 25 front rubber, 23.1 x 26 rear.



## PNEUMATIC ROLLERS



**CAT PS-360B** SN9LS00200 SERIES Cat 3054 diesel engine, 105hp, ROPS, 7-wheel roller, water system.



**INGERSOLL RAND PT240R** SN169753 Cummins diesel engine, 99hp, 8-wheel roller, water spray system, dual operator control.

## VIBRATORY ROLLER



**INGERSOLL RAND SD100D PRO PAC** SN161396 diesel engine, ROPS, 84in. smooth drum, vibratory drum, drum drive, 23.1-26 rubber. Shell Kit Sells Separately.

## 5 RUBBER TRACKED SKID STEERS



**2008 CAT 247B2** SNMTL05700 SERIES Cat diesel engine, rollcage, auxiliary hydraulics, mechanical quick coupler, rubber tracks, GP bucket.



**2006 CAT 247B** SNMTL03900 SERIES Cat diesel engine, rollcage, auxiliary hydraulics, mechanical quick coupler, rubber tracks, GP bucket.



**2006 CAT 247B** SNMTL03600 SERIES Cat diesel engine, rollcage, auxiliary hydraulics, mechanical quick coupler, rubber tracks, GP bucket.

**2006 CAT 247B** SNCML005500 SERIES Cat diesel engine, rollcage, auxiliary hydraulics, mechanical quick coupler, rubber tracks, GP bucket.

**2005 CAT 247B** SNMTL01200 SERIES Cat diesel engine, rollcage, auxiliary hydraulics, mechanical quick coupler, rubber tracks, GP bucket.

## 18 SKID STEER ATTACHMENTS



**CAT BA18** ANGLE BROOM



**ERSKINE 76IN.** LANDSCAPE RAKE



**BOBCAT 72IN.** SWEEPER

**NEW HAWZ 84IN.** ROOT GRAPPLE W/ 6 1/2IN. SPACING

**NEW HAWZ 74IN.** ROOT GRAPPLE W/ 6 1/2IN. SPACING

**NEW HAWZ 74IN.** TINE GRAPPLE W/ 8IN. SPACING (2)NEW HAWZ TREE/ FENCE POST PULLER with push bar, cylinder covers, rated up to 8in. Trees.

**NEW HAWZ 7FT.** FORK EXTENSIONS (2)NEW HAWZ UNIVERSAL QUICK ATTACH PLATE (2)NEW HAWZ RECEIVER HITCH



**74IN.** ROCK BUCKET FORKS

(2)NEW JBX 4000 48IN. PALLET FORKS  
(2) NEW 12 X 16.5 12PLY TIRES

## TELESCOPIC FORKLIFT



**2008 GEHL DL11L-55** SN545498 4x4, diesel engine, OROPS, 11,000lb lift capacity, 55ft. reach height, front stabilizers.

## GENERATORS



**2010 MAGNUM MMG55FH** SN1032099 diesel engine, 42kw, 53kva, tandem axle.





**MULTIQUIP DCA-45SSIU3** SN3775833 Isuzu diesel engine, 55hp, 45kva, 26kw, 3 phase, tandem axle.

## 3 SWEEPERS



**2005 BROCE BB250B** SN304132 diesel engine, ROPS, 8ft. Sweeper.



**BROCE RJ-300** SNRJ30087882 John Deere diesel engine, ROPS, 8ft. Sweeper.

**1997 FORD CF8000** VNA44124 diesel engine, automatic transmission, power steering, sweeper body, single axle.

## VACUUM TRUCK



**1995 MACK RD690S** VN018093 Mack diesel engine, power steering, double frame, 3,200 gallon stainless vac tank, vacuum pump, 11R24.5 tires, tandem axle.

## WATER WAGON



**CAT 613B** SN38W07000 SERIES Cat 3208 diesel engine, OROPS, Magnum 5,000 gallon water tank, 20.5-25 rubber.

## 11 WATER TRUCKS



**2007 PETERBILT 340** VN730526 Cat C7 diesel engine, 10 speed transmission, double frame, 4,000 gallon water tank, front rear and side spray heads, spring suspension, 11R22.5 tires, tandem axle.



**2003 FREIGHTLINER M2 106** VNL69542 Cat 3126 diesel engine, 300hp, 9 speed transmission, power steering, double frame, Ledwell 4,000 gallon water tank, air ride suspension, 22.5 tires, tandem axle.

**1996 FREIGHTLINER FLD120** VN785131 diesel engine, power steering, double frame, 4,000 gallon water tank, spring suspension, 11R24.5 tires, tandem axle.



**1999 MACK CH613** VN113450 Mack E7 diesel engine, 427hp, Maxitorque transmission, power steering, double frame, 4,000 gallon water tank, air ride suspension, 22.5 tires, tandem axle.



**1997 MACK CH613** VN070295 Mack E7 diesel engine, 454hp, Maxitorque 9 speed transmission, power steering, double frame, 4,000 gallon water tank, air ride suspension, 11R24.5 tires, tandem axle.

**1997 MACK CH613** VN070530 Mack E7 diesel engine, power steering, double frame, 4,000 gallon water tank, spring suspension, tandem axle.

**1997 MACK CH613** VN70299 Mack E7 diesel engine, 427hp, Maxitorque transmission, power steering, double frame, 4,000 gallon water tank, air ride suspension, 22.5 tires, tandem axle.

**1997 MACK CH613** VN70315 Mack E7 diesel engine, 454hp, Maxitorque 13 speed transmission, power steering, double frame, 4,000 gallon water tank, air ride suspension, 11R24.5 tires, tandem axle.



**1996 MACK RD690S** VN20832 Mack diesel engine, Maxitorque 7 speed transmission, power steering, double frame, 4,000 gallon water tank, front rear and side spray heads, air ride suspension, 11R24.5 tires, tandem axle.

**1996 INTERNATIONAL 8200** VN224387 diesel engine, power steering, double frame, 4,000 gallon water tank, spring suspension, 11R24.5 tires, tandem axle.



**1988 VOLVO WCA** VN128421 diesel engine, 9 speed transmission, power steering, double frame, 4,000 gallon water tank, spring suspension, 11R24.5 tires, tandem axle.

## FLATBED TRUCK

**1995 FORD F350XL** VNA74744 4x4, gas engine, automatic transmission, power steering, 8ft. Flatbed.

## 5 DUMP TRUCKS



**2001 MACK RD688S** VN58632 Mack E7 diesel engine, 350hp, 8LL transmission, power steering, double frame, 15ft. 16 yard steel Ox box, camelback suspension, 44,000 lbs, 11R24.5 tires, tandem axle.



**1998 MACK CH613** VN092435 Mack E7 diesel engine, 350hp, Maxitorque transmission, power steering, double frame, 14ft. steel dump box, high lift gate, tarp, rear pintle hitch, air ride suspension, 11R24.5 tires, tandem axle.





**1996 MACK CH613** VN62164 Mack E7 diesel engine, 427hp, 10 speed transmission, power steering, double frame, 16ft. 19 yard OX steel dump box, air ride suspension, 11R24.5 tires, tandem axle.

**1992 MACK RD690S** VN010294 Mack diesel engine, Maxitorque transmission, power steering, double frame, 17ft. 21 yard OX steel dump body, pintle hitch, camelback suspension, 11R24.5 tires, tandem axle.

**1992 MACK RD690S** VN010292 Mack diesel engine, power steering, double frame, steel dump box, spring suspension, tandem axle.

## 17 TRUCK TRACTORS



**2003 MACK CH613** VN149318 Mack E7 diesel engine, 427hp, 13 speed transmission, power steering, 48in. sleeper, sliding fifth wheel, air ride suspension, 11R22.5 tires, tandem axle.



**2003 MACK CH613** VN153833 Mack E7 diesel engine, 427hp, 10 speed transmission, power steering, sliding fifth wheel, air ride suspension, 11R22.5 tires, tandem axle.

**2003 MACK CH613** VNN/A Mack E7 diesel engine, 427hp, 10 speed transmission, power steering, wet kit, air ride suspension, 11R22.5 tires, tandem axle.



**2003 MACK CH613** VN153808 Mack E7 diesel engine, 427hp, 10 speed transmission, power steering, air ride suspension, 11R22.5 tires, tandem axle.



**2003 MACK CH613** VN154834 Mack E7 diesel engine, 427hp, 10 speed transmission, power steering, air ride suspension, 11R22.5 tires, tandem axle.

**2003 MACK CH613** VN153810 Mack E7 diesel engine, power steering, air ride suspension, tandem axle.

**2003 MACK CH613** VN155119 Mack E7 diesel engine, 10 speed transmission, power steering, sliding fifth wheel, air ride suspension, 11R24.5 tires tandem axle.



**2001 MACK CH613** VN140936 Mack E7 diesel engine, 10 speed transmission, power steering, sliding fifth wheel, air ride suspension, 11R24.5 tires tandem axle.

**2000 MACK CH613** VN130295 Mack E7 diesel engine, 355hp, 10 speed transmission, power steering, sliding fifth wheel, air ride suspension, 11R24.5 tires, tandem axle.



**1998 MACK CH613** VN86305 Mack E7 diesel engine, 427hp, Maxitorque transmission, power steering, wet kit, sliding fifth wheel, air ride suspension, 11R24.5 tires, tandem axle.



**1996 MACK CH613** VN062162 Mack E7 diesel engine, 427hp, 10 speed transmission, power steering, wet kit, sliding fifth wheel, air ride suspension, 11R22.5 tires, tandem axle.

**1996 MACK CH613** VN062163 Mack diesel engine, power steering, air ride suspension, tandem axle.

**1995 MACK CH613** VN054087 Mack diesel engine, power steering, spring ride suspension, 22.5 tires, tandem axle.

**1991 MACK CH613** VN012380 Mack diesel engine, power steering, 48in. sleeper, air ride suspension, tandem axle.

**1998 MACK CH613** VN085440 No engine, parts truck.

**1981 GMC GENERAL** VNA50482 diesel engine, power steering, spring ride suspension, 22.5 tires, tandem axle.



**1990 FREIGHTLINER FLD120** VN379662 diesel engine, 9 speed transmission, power steering, sliding fifth wheel, spring suspension, 11R24.5 tires, tandem axle.

## UTILITY TRUCK

**2001 FORD F250** VNC50895 gas engine, automatic transmission, power steering, extended cab, 8ft. Utility body.

## 4 SERVICE TRUCKS



**2001 FREIGHTLINER FL70** VNJ42547 diesel engine, 6 speed transmission, power steering, service body, Power Lift 6,000lb crane, dual wheel single axle.



**2001 STERLING L7500** VNJ15378 Cat diesel engine, 9 speed transmission, power steering, air brakes, double frame, 15ft. utility body, IMT 3820 crane, Miller welder, hose reels, 11R22.5 tires, dual wheel single axle



**1999 MACK CH612** VN016997 Mack E7 diesel engine, 300hp, 10 speed transmission, power steering, 11ft. utility box, 6,000lb auto crane, air compressor, fuel tank, 11R22.5 tires, dual wheel single axle.



**1989 DODGE D350** VN174648 gas engine, automatic transmission, power steering, 8ft. utility box

## 4 FUEL/LUBE TRUCKS



**2004 INTERNATIONAL 4300** VN605805 International DT466 diesel engine, power steering, air brakes, 16ft. lube body, fuel tank, 5 product tanks, enclosed hose reel compartment, hose reels, greaser, filter box, tool boxes, 22.5 tires, dual wheel single axle.



**1997 FREIGHTLINER FL70** VN794703 diesel engine, 9 speed transmission, power steering, air brakes, lube body, fuel tank, 4-product tanks, air compressor, hose reels, 22.5 tires, dual wheel single axle

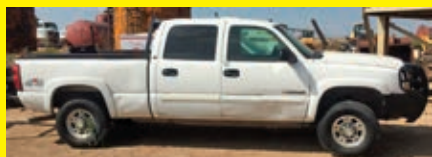


**1995 FREIGHTLINER FL70** VN676170 diesel engine, 6 speed transmission, power steering, air brakes, S-TEC fuel and lube body, 22.5 tires, dual wheel single axle.



**1995 KENWORTH T300** VN661782 Cummins diesel engine, 9 speed transmission, power steering, air brakes, lube body, 700 and 300 gal fuel tanks, 5 product tanks, enclosed hose reel compartment, air compressor, greaser, 22.5 tires, dual wheel single axle.

## 29 PICKUP TRUCKS



**2006 CHEVY SILVERADO 2500HD** VN263173 4x4, gas engine, automatic transmission, power steering, 4-door, short box.

**CHEVY SILVERADO 2500HD** VN836275 4x4, gas engine, automatic transmission, power steering, 4 door, short box, parts truck.



**2009 CHEVY SILVERADO 1500** VN102817 4x4, gas engine, automatic transmission, power steering, extended cab, short box.



**2009 CHEVY SILVERADO 1500** VN103100 gas engine, automatic transmission, power steering.



**2007 CHEVY SILVERADO 1500** VN614023 4x4, gas engine, automatic transmission, power steering, extended cab, short box.



**2007 CHEVY SILVERADO 1500** VN647701 gas engine, automatic transmission, power steering, extended cab, 8ft. Box.

**2007 CHEVY SILVERADO 1500** VN710402 gas engine, automatic transmission, power steering, extended cab, short box.

**2004 CHEVY SILVERADO 1500** VN223694 gas engine, automatic transmission, power steering, 8ft. Box.

**2002 CHEVY SILVERADO 1500** VN143103 4x4, gas engine, automatic transmission, power steering, 4 door, short box.

**2000 CHEVY SILVERADO 1500** VN299490 gas engine, automatic transmission, power steering, extended cab, short box.

**1999 CHEVY SILVERADO 1500** VN127138 4x4, gas engine, automatic transmission, power steering, 8ft. Box.

**1996 CHEVY SILVERADO 1500** VN232214 gas engine, automatic transmission, power steering, extended cab, short box.



**2008 FORD F250 SUPER DUTY** VND08603 4x4, diesel engine, automatic transmission, power steering, extended cab, flatbed

**2006 FORD F250** VNA50197 4x4, gas engine, automatic transmission, power steering, 4 door, 8ft box.

**2001 FORD F250 XL** VNB15704 gas engine, automatic transmission, power steering, extended cab, 8ft. Box.

**2000 FORD F250** VNE44797 gas engine, automatic transmission, power steering, extended cab, 8ft box.

**2006 FORD F150** VNA38929 gas engine, automatic transmission, power steering, extended cab, 8ft box.

**2006 FORD F150** VND14929 gas engine, automatic transmission, power steering, extended cab, short box.

**2006 FORD F150** VND65785 gas engine, automatic transmission, power steering, extended cab, short box.

**2005 FORD F150** VNB36250 4x4, gas engine, automatic transmission, power steering, extended cab, short box.

**2005 FORD F150** VNB91852 gas engine, automatic transmission, extended cab, 8ft box.



**2004 FORD F150** VNC10396 gas engine, automatic transmission, power steering.

**2002 FORD F150 XL** VNC07123 gas engine, automatic transmission, power steering, extended cab, short box.

**1997 FORD F150** VNC77505 gas engine, automatic transmission, power steering, 8ft. Box.

**1997 FORD F150** VNC77508 gas engine, automatic transmission, power steering, 8ft. Box.

**2008 GMC SIERRA 1500** VN182073 4x4, gas engine, automatic transmission, power steering, 4 door, short box

**2007 GMC SIERRA 1500** VN625934 gas engine, automatic transmission, power steering.



**2004 GMC SIERRA 1500** VN270254 4x4, gas engine, automatic transmission, power steering, extended cab, short box.



**1999 GMC SIERRA 1500** VN512673 gas engine, automatic transmission, power steering, extended cab, short box.



## SPORT UTILITY VEHICLE

**1999 CHEVY SUBURBAN 1500** VN245480 4x4, gas engine, automatic transmission, 4 door.

## AUTOMOBILE

**2008 KIA SEDONA EX** VN197749 gas engine, automatic transmission, power steering.

## DETACHABLE GOOSENECK TRAILER

**1993 WITZCO RG-50** VN061040 50 ton capacity, triaxle. Rear is burnt.

## FLATBED TRAILERS

**1986 LUFKIN TD25** 22/19 VN071698 25ft. steel dump box, 24.5 tires, tandem axle.

**1972 LUFKIN SN36812** 45ft. length, 22.5 tires, tandem axle.

## TANKER TRAILER

**1982 TRAILMASTER** VN003240 spring ride suspension, 11R24.5 tires, tandem axle.

## EQUIPMENT TRAILER



**1976 LOAD KING 25 TON** VNCS4216 25 ton capacity, 96in. wide, beavertail, steel ramps, tandem axle.

## 3 TAGALONG TRAILERS

**2006 INTERSTATE 20DT** VN007849 10 ton capacity, 102in. wide, electric brakes, beaver tail, steel ramps, tandem axle.

**1989 BELSHE** VN020511 20,000lb capacity, gooseneck, beaver tail, steel ramps, tandem axle.



**1988 HOMEMADE** VNN/A 14,000lb GVWR, 6ft. 6in. x 16ft. fuel tank, hose reels, ST235/80R16 tires, tandem axle.

## 6 BELLY DUMP TRAILERS



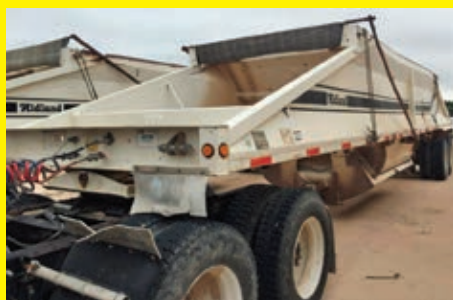
**2001 MIDLAND MG40MC2000** VN001610 80,000 GVWR, 40ft. bottom dump, spring suspension, 11R24.5 tires, tandem axle.



**2001 MIDLAND MG40MC2000** VN001571 80,000 GVWR, 40ft. bottom dump, spring suspension, 11R24.5 tires, tandem axle.



**2001 MIDLAND MG40MC2000** VN001570 80,000 GVWR, 40ft. bottom dump, spring suspension, 11R24.5 tires, tandem axle.



**2001 MIDLAND MG40MC2000** VN001569 80,000 GVWR, 40ft. bottom dump, spring suspension, 11R24.5 tires, tandem axle.



**1996 CPS** VN389858 80,000 GVWR, 40ft. bottom dump, spring suspension, 11R24.5 tires, tandem axle.



**1996 CPS** VN389997 80,000 GVWR, 40ft. bottom dump, spring suspension, 11R24.5 tires, tandem axle.

## 4 ENCLOSED TAGALONG TRAILERS



**2006 FOREST RIVER** VN053974 9,950 GVWR, 102in. wide, 25ft. long, side door, laydown rear door, ST225/75R15 tires, tandem axle.

**2006 FOREST RIVER** VN3391 7,000 GVWR, 6ft. wide, 16ft. long, side door, rear doors, ST225/75R15 tires, tandem axle.



**2006 TITAN** VN005014 7,000 GVWR, 6ft. wide, 16ft. long, side door, rear doors, ST225/75R15 tires, tandem axle.



**2012 CARGO MITE CMC5130** VN005228 3,000 GVWR, 6ft. x 12ft. Enclosed body, laydown rear door, single axle.

## BULK TRAILER

**BULK TRAILER** VNN/A 1,000 cubic ft capacity, spring suspension, 11R24.5 tires, tandem axle.

## VAN TRAILER

**1995 MONON** VN262707 48ft. length, 11R22.5 tires, sliding tandem axle.

## TRUCK SCALE



**60FT. X 10FT. TRUCK SCALE** with scale house 16ft. x 8ft.



## FUEL TANK

FUEL TANK W/ SELF CONTAINMENT

## PRESSURE WASHER

2011 BIG TEX 70SP-12A VNE84967 gas powered hot water pressure washer, 300 gallon water tank, trailer mounted tandem axle.

## 42 NEW SUPPORT EQUIPMENT

- (3) NEW MUSTANG MP4800 2IN. SUBMERSIBLE PUMP
- (4) NEW MUSTANG LF88 PLATE COMPACTOR
- (2) NEW MUSTANG CV3500 CONCRETE VIBRATOR
- (4) NEW 1/2IN. DRIVE AIR IMPACT WRENCH KIT
- (6) NEW 2IN. X 50FT. DISCHARGE WATER HOSES
- (8) NEW 3PC 14IN. PREMIUM DIAMOND BLADES

- (2) NEW HUSKIE 11218 SDS HAMMER DRILL
- (4) NEW AUTO DARKENING WELDING HELMET
- (2) NEW 3/8IN. X 50FT. AUTOMATIC AIR HOSE REEL
- (4) NEW 25FT. 800AMP EXTRA HD BOOSTER CABLES
- NEW 1IN. DRIVE AIR IMPACT WRENCH
- (2) NEW 4-PACK 10,000LB RATCHET CARGO STRAPS

# AMERICA'S AUCTION COMPANY

## KISSIMMEE (WINTER GARDEN), FLORIDA - FRIDAY, OCTOBER 28<sup>TH</sup> AT 10:00 AM

**ADDRESS:** 12601 State Road 545 North, Winter Garden, Florida 34787. **NOTE:** This sale will consist of Late Model Rental Fleet Equipment from national rental fleets. **SALE SITE PHONE:** Sale Site Phone: (407) 239-2700. **FLORIDA LICENSE:** AB-1091. **FLORIDA AUCTIONEER:** AU-1548 Jack Lyon. **TERMS & CONDITIONS:** "Cash or Company Check" accompanied by current "Bank Letter of Guarantee", made payable to Alex Lyon & Son. Everything Sells "AS IS, WHERE IS." *The following charges will apply on all purchases:* (1.) For each unit \$20,001.00 and above, a 5.95% administration fee will be assessed when paying with cash or good check. (The standard fee of 8.95% will be assessed when paying with credit card). (2.) For each unit \$1,001- \$20,000, a 10% administration fee will be assessed when paying with cash or good check, and a 13% fee will be assessed when paying with credit card. (3.) For each unit \$0- \$1,000, a 12.5% administration fee will be assessed when paying with cash or good check, and a 15.5% fee will be assessed when paying with credit card.



FOR BID ONLINE  
TECHNICAL ASSISTANCE  
CALL (919) 595-2907

## 23 HYDRAULIC EXCAVATORS

2010 KOBELCO SK350LC SNYC08U2136 Hino JO8E-TM diesel engine, 264hp, Cab, air, heat, reach boom, 36in. Digging bucket with hydraulic thumb, long undercarriage.



2010 KOBELCO SK350LC SNYC08U2188 Hino JO8E-TM diesel engine, 264hp, Cab, air, heat, reach boom, 36in. Digging bucket with sandplate, long undercarriage.

2011 KOBELCO SK210LC-8 SNYQ12U4802 Fiat F4GE9684E-J6 diesel engine, 150hp, Cab, air, 31.5in. Pads, digging bucket, long undercarriage.



(2) 2010 KOBELCO SK210LC Fiat F4GE9684E-J6 diesel engine, 150hp, Cab, air, 31.5in. Pads, digging bucket, long undercarriage.



(3) 2009 KOBELCO SK210LC Fiat F4GE9684E-J6 diesel engine, 150hp, Cab, air, 31.5in. Pads, digging bucket, long undercarriage.

2006 CAT 320C SNPAB6900 SEIRES Cat 3066 diesel engine, Cab, air, reach boom, digging bucket, long undercarriage.

CAT 320CL SNEAG00200 SERIES Cat diesel engine, Cab, air, reach boom, digging bucket, long undercarriage.



2005 KOMATSU PC300LC-7 SNA86545 Komatsu diesel engine, Cab, air, heat, radio, reach boom, 10ft. 6in. Stick, 34in. Pads, 54in. Digging bucket, long undercarriage.

2011 KOMATSU PC200LC-8 SNA90183 Komatsu diesel engine, Cab, digging bucket, long undercarriage.

2011 KOMATSU PC138USLC-8 SN24428 Komatsu diesel engine, Cab, air, long stick, short tail swing, 36in. Digging bucket, long undercarriage.

2008 JOHN DEERE 200DLC SNFF200DX510577 John Deere diesel engine, Cab, air, digging bucket with thumb, long undercarriage.

JOHN DEERE 160LC SNX040090 John Deere diesel engine, Cab, grapple, long undercarriage.

2006 HITACHI ZX200LC SNJ007987 Isuzu diesel engine, Cab, heat, 9ft. 6in. stick, 32in. pads, manual thumb, 42in. digging bucket, long undercarriage.

2011 IHI 80VX-3 SNWK002238 Yanmar 4TNV98 diesel engine, 56hp, Cab, front blade, digging bucket.

2010 IHI 80VX-3 SNWK002193 Yanmar 4TNV98 diesel engine, 56hp, Cab, front blade, digging bucket.

2007 IHI 65NX SNWW000448 Yanmar 4TNV94L diesel engine, 65hp, OROPS, front blade, rubber tracks, digging bucket.

2012 IHI 55N-3 SNWP003220 diesel engine, OROPS, front blade, auxiliary hydraulics, rubber tracks, digging bucket.

2010 IHI 55VX SNWZ000171 diesel engine, OROPS, front blade, auxiliary hydraulics, rubber tracks, digging bucket.

2011 IHI 35N-3 SNWM003236 Yanmar 3TNV84 diesel engine, 26hp, OROPS, front blade, rubber tracks, digging bucket.

2012 TAKEUCHI TB285 SN185000344 Yanmar 4TNV98T diesel engine, 69hp, Cab, front blade, digging bucket.

## LONG REACH EXCAVATOR

2010 JOHN DEERE 240DLC SNJA0606130 John Deere diesel engine, Cab, air, 60ft. Reach boom and stick, digging bucket with thumb, long undercarriage.

## RUBBER TIRED EXCAVATORS

2010 DOOSAN DX210WB SNAEP90005671 diesel engine, Cab, telescoping boom, digging bucket.

2006 VOLVO EW180B SN875171P04 diesel engine, Cab, air, VA boom, hydraulic tilting bucket.

## 6 HYDRAULIC HAMMERS

2012 D&A 300V HYDRAULIC HAMMER SN303B196

ATLAS COPCO SBC610 HYDRAULIC HAMMER SNKAL001166

ATLAS COPCO SB202 HYDRAULIC HAMMER SNBES011662

INDECO HP8000 HYDRAULIC HAMMER SN1849

CP RX22 HYDRAULIC HAMMER SN125

CP180 HYDRAULIC HAMMER SNKAL001712



## 8 RUBBER TIRED LOADERS

**2007 KOMATSU WA470-6** SN85205 Komatsu SAA6D125E-3 diesel engine, 271hp, EROPS, air, GP bucket, 26.5R25 rubber.

**2011 KOMATSU WA250-6** SN76336 Komatsu diesel engine, EROPS, air, heat, 3 yard GP bucket.

**2011 KOMATSU WA250-6** SN76321 Komatsu diesel engine, EROPS, air, heat, 3 yard GP bucket.

**2012 KOMATSU WA50-6** SN61846 Komatsu diesel engine, EROPS, 3/4 yard GP bucket.

**2008 JOHN DEERE 624J** SNJ2616774 John Deere diesel engine, EROPS, 3.5 yard GP bucket.

**CAT 988B** Cat 3408 diesel engine, 375hp, EROPS, air, heat, GP bucket,

**CASE 721D** SNJEE0137974 Case diesel engine, EROPS, air, GP bucket.

**CASE 321D** SNHEC0591119 Case diesel engine, EROPS, GP bucket, 2,300 hours. Fresh rebuild on hydro pump. Forks & Tree Boom Sell Separately.

## 3 CRAWLER TRACTORS

**2009 JOHN DEERE 650J** SNT0650JX172921 John Deere diesel engine, EROPS, air, 6 way blade.



**2008 KOMATSU D65PX-15EO** SNT70323 Komatsu diesel engine, EROPS, engine enclosures, Straight blade with hydraulic tilt, 36in. Pads.



**CAT D7H** SN79Z01700 SERIES Cat 3306 diesel engine, EROPS, Straight blade with tilt, good undercarriage.

## 7 TRACTOR LOADER BACKHOES

**2009 NEW HOLLAND B95B** SNN9C521511 New Holland 445T/M2 diesel engine, 95hp, EROPS, air, heat, pilot controls, GP front bucket, 24in. rear digging bucket, 2,739 hours.



**NEW HOLLAND 555D** SNA726972 4x4, diesel engine, EROPS, GP front bucket, rear digging bucket.

**2008 JOHN DEERE 310J** SNT0310JX168166 4x4, John Deere diesel engine, EROPS, GP front bucket, rear digging bucket.

**JOHN DEERE 310C** SN310CCF767605 4x4, John Deere diesel engine, EROPS, 1 yard GP front bucket with flip over forks, 24in. Rear digging bucket.

**2007 VOLVO BL70** SN10905 4x4, diesel engine, equipped EROPS, air, 4-in-1 front bucket, 12in. Rear digging bucket.

**2007 KOMATSU WB140-2N** SNA22552 4x4, Komatsu diesel engine, EROPS, GP front bucket, rear digging bucket.

**CAT 426C** SN6XN01300 SERIES Cat diesel engine, EROPS, extendahoe, rear auxiliary hydraulics, GP front bucket, rear digging bucket.

## 5 TRACTOR LOADER BACKHOE ATTACHMENTS

**ATLAS COPCO SBC800** HYDRAULIC HAMMER SNKAL00808

**ATLAS COPCO SB450** HYDRAULIC HAMMER SNKAL001368

**INDECO HP500** HYDRAULIC HAMMER SN22392

**UB 304** HYDRAULIC HAMMER SN4517

**2010 MILLER 48IN.** BUCKET FORKS SNMIA-FORK2

## ASPHALT PAVER



**CAT AP-650B** powered by Cat diesel engine, equipped with 8ft.-16ft. screed, track mounted.

## VIBRATORY ROLLER

**2011 HAMM 3410** SNH1791320 diesel engine, EROPS, 84in. Smooth drum, vibratory drum, drum drive.

## TRENCH ROLLER

**ATLAS COPCO LP8504** SN18501090 diesel engine, padsfoot drum, double drum, vibratory drum, drum drive.

## RUBBER TRACKED SKID STEER

**2013 CAT 289C2** SNRTD01700 SERIES Cat diesel engine, rollcage, auxiliary hydraulics, mechanical quick coupler, New 18in. Rubber tracks, 78in. GP bucket, 1,000 hours.

## 105 SKID STEER ATTACHMENTS

**BOBCAT 1560** HYDRAULIC HAMMER SN540

**BOBCAT 850** HYDRAULIC HAMMER SN3570

**KENT KF4** HYDRAULIC HAMMER SN10685

**HUSKIE HH500** HYDRAULIC HAMMER SN5R2-2246

**TORO 22441** HYDRAULIC HAMMER SN25175

(4) NEW 84IN. FORK EXTENSIONS

(4) NEW 72IN. FORK EXTENSIONS

(2) NEW 2 YARD TRASH HOPPER skid steer mount.

(2) NEW 3/4 CUBIC YARD CONCRETE PLACEMENT BUCKET

(8) NEW ATTACHMENT FRAME

(2) NEW WILDCAT TREE/POST PULLER

(2) NEW WILDCAT TREE SHEAR

(2) NEW WILDCAT TILLER

(3) NEW WILDCAT STUMP GRAPPLE

(2) NEW WILDCAT STUMP BUCKET

(3) NEW WILDCAT REESE HITCH RECEIVER

(2) NEW WILDCAT HYDRAULIC FORK POSITIONER

(2) NEW WILDCAT HAY SPEAR

NEW WILDCAT FORK GRAPPLE

NEW WILDCAT E-SERIES ROOT RAKE

(2) NEW WILDCAT BROOM

NEW WILDCAT BACKHOE

(3) NEW WILDCAT AUGER

NEW WILDCAT 96IN. SNOW PLOW

(2) NEW WILDCAT 84IN. ROOT RAKE W/ TEETH

NEW WILDCAT 80IN. ROCK GRAPPLE BUCKET W/ TEETH

NEW WILDCAT 80IN. ROCK BUCKET W/ TEETH

NEW WILDCAT 80IN. LP BUCKET W/ BOCE

(2) NEW WILDCAT 78IN. SNOW & LITTER

BUCKET W/ BOCE

NEW WILDCAT 78IN. SKELETON ROCK BUCKET

NEW WILDCAT 78IN. LP BUCKET W/ BOCE

NEW WILDCAT 78IN. E-SERIES ROCK GRAPPLE

NEW WILDCAT 74IN. SNOW & LITTER BUCKET W/ BOCE

NEW WILDCAT 72IN. SNOW & LITTER BUCKET W/ BOCE

NEW WILDCAT 72IN. SKELETON ROCK GRAPPLE

(2) NEW WILDCAT 72IN. ROOT GRAPPLE

NEW WILDCAT 72IN. ROCK GRAPPLE BUCKET W/ TEETH

NEW WILDCAT 72IN. ROCK BUCKET W/ TEETH

NEW WILDCAT 72IN. LP BUCKET W/ BOCE

NEW WILDCAT 72IN. E-SERIES SKELETON

BUCKET

NEW WILDCAT 72IN. E-SERIES ROOT RAKE

NEW WILDCAT 72IN. E-SERIES ROOT GRAPPLE

NEW WILDCAT 72IN. E-SERIES GRAPPLE BUCKET

(8) NEW WILDCAT 72IN. BUSH HOG

NEW WILDCAT 68IN. LP BUCKET W/ BOCE

NEW WILDCAT 66IN. SKELETON ROCK GRAPPLE

NEW WILDCAT 66IN. ROCK BUCKET W/ TEETH

NEW WILDCAT 66IN. E-SERIES SKELETON

BUCKET

NEW WILDCAT 66IN. E-SERIES ROOT RAKE

NEW WILDCAT 66IN. E-SERIES ROOT GRAPPLE

NEW WILDCAT 63IN. LP BUCKET W/ BOCE

(10) NEW WILDCAT 48IN. FORKS

(3) NEW WILDCAT 3PT HITCH

(2) NEW JBX 4000 48IN. PALLET FORKS

(2) NEW 12 X 16.5 12PLY TIRES

## 7 TELESCOPIC FORKLIFTS



**2008 JLG 1044C-54** SN160036505 4x4, John Deere 4045T diesel engine, EROPS, 10,000lb lift capacity, 54ft. reach height, front stabilizers, foam filled rubber.

**2007 JLG 1044C-54** SN160027657 4x4, John Deere 4045T diesel engine, EROPS, 10,000lb lift capacity, 54ft. reach height, front stabilizers, foam filled rubber.

**LULL 644 S** N114654 4x4, diesel engine, EROPS, 6,000lb lift capacity, 44ft. Reach height, tilt carriage, 48in. Forks.

**2007 JCB 506C** SN1184598 4x4, diesel engine, EROPS, 6,000lb lift capacity, 36ft. Reach height.



**2007 JCB 506C** SN1184414 4x4, diesel engine, OROPS, 6,000lb lift capacity, 36ft. Reach height.  
**2006 JCB 506C** SN1184133 4x4, diesel engine, OROPS, 6,000lb lift capacity, 36ft. Reach height.  
**2006 JCB 506C** SN1184129 4x4, diesel engine, OROPS, 6,000lb lift capacity, 36ft. Reach height.

## ROUGH TERRAIN FORKLIFTS

**2007 CASE 586G** SNJJG0294358 4x4, diesel engine, OROPS, 6,000lb lift capacity, 22ft. Reach height.  
**2006 CASE 586G** SNJJG0293576 4x4, diesel engine, OROPS, 6,000lb lift capacity, 22ft. Reach height.

## 8 BOOM LIFTS

**2008 GENIE S65** SNS600818395 4x4, diesel engine, 65ft. Platform height, straight boom, JIB, 500lb lift capacity.



**2007 GENIE S60** SNS600716653 4x4, diesel engine, 60ft. Platform height, straight boom, 500lb lift capacity.  
**2006 GENIE Z45/25IC** SNZ45250628674 4x4, diesel engine, 45ft. Platform height, articulating boom, 500lb lift capacity.  
**2005 GENIE Z45/25IC** SNZ45250627223 4x4, dual fuel engine, 45ft. Platform height, articulating boom, 500lb lift capacity.  
**2007 GENIE S40** SNS400712750 4x4, diesel engine, 40ft. Platform height, straight boom, 500lb lift capacity.  
**2007 GENIE S40** SNS400712292 4x4, diesel engine, 40ft. Platform height, straight boom, 500lb lift capacity.  
**2007 GENIE S40** SNS400712287 4x4, diesel engine, 40ft. Platform height, straight boom, 500lb lift capacity.  
**JLG 600A** SN25815 4x4, diesel engine, 60ft. Platform height, articulating boom, 500lb lift capacity.

## 4 SCISSOR LIFTS

**2005 GENIE GS3384RT** SNGS840540755 4x4, dual fuel engine, 33ft. platform height, slide out deck, rough terrain tires.  
**2006 GENIE GS3246** SNGS460682058 electric powered, 32ft. Platform height, slide out deck.  
**2005 SKYJACK 3015** SN199967 electric powered, 15ft. Platform height, slide out deck, 500lb lift capacity, non-marking tires.  
**2005 GENIE 2646** SN46085 electric powered, 26ft. Platform height, slide out deck, 500lb lift capacity, non-marking tires, new batteries.

## 3 AIR COMPRESSORS

**2012 SULLIVAN DF375PDJD** SN032336 John Deere diesel engine, 375CFM, trailer mounted.  
**2007 SULLIVAN D375Q8CAY** SN071694 diesel engine, 375CFM, trailer mounted.  
**2006 DOOSAN P185WJD** SN364900UAQB34 John Deere diesel engine, 185CFM, trailer mounted.

## 3 GENERATORS

**CAT D343A** SN205SH1053 Cat diesel engine, 200KW, mounted in container.  
**2012 MAGNUM MMG35FHD-STD** SN1214028 diesel engine, 35KVA, trailer mounted.  
**2012 MAGNUM MMG35FHD-STD** SN1206312 diesel engine, 35KVA, trailer mounted.

## 12 LIGHT PLANTS



**(10) 2012 TEREX RL4** Kubota diesel engine, 4-1,000 watt lightbulbs, 6KW, trailer mounted.  
**(2) 2010 MAGNUM PRO MLT3060** diesel engine, 4-1,000 watt lightbulbs, 6KW generator, trailer mounted.

## WATER PUMP

**2011 PORTABLE 4DD** SN4DD216 diesel engine, 4in. Water pump.

## UTILITY TRACTOR

**2015 KUBOTA L4701F** SN10319 Kubota diesel engine, ROPS, hydrostatic transmission, 3pt hitch, PTO, 690 hours.

## WATER TRUCK

**2007 INTERNATIONAL 4200** VN540989 diesel engine, power steering, 2000 gallon water tank, dual wheel single axle.

## UTILITY TRUCKS



**2003 FORD F350 SUPER DUTY** VNN/A Power Stroke 6.0 diesel engine, automatic transmission, power steering, 2-door, utility body.



**2003 FORD F250 KING RANCH** VNN/A Power Stroke 6.0 diesel engine, automatic transmission, power steering, 4-door, utility body.

## PICKUP TRUCK

**2005 DODGE RAM 2500** VN828660 gas engine, good rubber.



## LOW BOY TRAILERS



**NEW-2015 TALBERT T3-50CC-FG-T1** VN034122 50 ton capacity, 25ft. 6in. well, 8ft. 6in. wide, Apitong deck, mechanical, triaxle.  
**NEW-2015 TALBERT T3-50CC-FG-T1** VN034121 50 ton capacity, 25ft. 6in. well, 8ft. 6in. wide, Apitong deck, mechanical, triaxle.

## 15 CONTAINERS

**40FT. REFRIGERATED CONTAINER**  
**(10) 40FT. CONTAINER**  
**(4) 20FT. CONTAINER**

## 6 SCRAP RECYCLING EQUIPMENT

**(2) NEW 2 YARD SELF DUMPING HOPPER** 4,000lb capacity.  
**(2) NEW 1.5 YARD STACKABLE SELF DUMPING HOPPER** 4,000lb capacity.  
**(2) NEW 1 YARD STACKABLE SELF DUMPING HOPPER** 4,000lb capacity.

## EQUIPMENT PARTS

**RESEAL CONTROL** SN2E9540  
**SWING MOTOR**

## 7 TIRES, NEW & USED



**(4) NEW MARCHER 29.5 X 25, L3/E3, 34PR**  
**TIRES FRESH PRODUCTION JUNE 2016**



**(2) NEW MARCHER 26.5 X 25, L3/E3, 28PR**  
**TIRES FRESH PRODUCTION JUNE 2016**



**(2) NEW MARCHER 23.5 X 25, L3/E3, 24PR**  
**TIRES FRESH PRODUCTION JUNE 2016**





(2) NEW MARCHER 20.5 X 25, L3/E3, 24PR TIRES FRESH PRODUCTION JUNE 2016

(4) NEW MARCHER 12 X 16.5 TIRES FRESH PRODUCTION JUNE 2016

# LYON



(4) NEW MARCHER 10 X 16.5 TIRES FRESH PRODUCTION JUNE 2016  
USED TIRE

## PRESSURE WASHERS

(2) NEW EASY KLEEN MANGUM GOLD gas engine, 4000PSI, 12VOLT, 15hp, Hot Water totally self contained.

## 50 NEW SUPPORT EQUIPMENT

(3) NEW MUSTANG MP4800 2IN. SUBMERSIBLE PUMP  
(4) NEW MUSTANG LF88 PLATE COMPACTOR  
(2) NEW MUSTANG CV3500 CONCRETE VIBRATOR

- (4) NEW 1/2IN. DRIVE AIR IMPACT WRENCH KIT
- (6) NEW 2IN. X 50FT. DISCHARGE WATER HOSES
- (8) NEW 3PC 14IN. PREMIUM DIAMOND BLADES
- (2) NEW HUSKIE 11218 SDS HAMMER DRILL
- (4) NEW AUTO DARKENING WELDING HELMET
- (2) NEW 3/8IN. X 50FT. AUTOMATIC AIR HOSE REEL
- (4) NEW 25FT. 800AMP EXTRA HD BOOSTER CABLES
- NEW 1IN. DRIVE AIR IMPACT WRENCH
- (2) NEW 4-PACK 10,000LB RATCHET CARGO STRAPS
- (2) NEW 29.5IN. X 90IN. WELDING TABLE
- (4) NEW 30IN. X 57IN. WELDING TABLE
- (2) NEW 3/8IN. AR500 DUELING TREE SHOOTING TARGET

## LATE ADDITIONS

- 2007 SNORKEL TB60 BOOM LIFT
- (3) 2008 SNORKEL TB42 BOOM LIFTS
- (2) 2006 GENIE GTH636 TELESCOPIC FORK-LIFTS
- INGERSOLL RAND G80 GENERATOR

# AMERICA'S AUCTION COMPANY

## WEST PALM BEACH, FLORIDA - SATURDAY, OCTOBER 29<sup>TH</sup> AT 10:00 AM

**ADDRESS:** 1014 S. Congress Ave., West Palm Beach, Florida 33406. **NOTE:** CBS Rental and Supply, having purchased Discount Equipment, a highly successful rental company that has been in business many years, will sell the following Rental Fleet Equipment that will not be needed in ongoing operations. **SALE SITE PHONE:** (863) 660-4203. **FLORIDA LICENSE:** AB-1091. **FLORIDA AUCTIONEER:** AU-1548 Jack Lyon. **TERMS & CONDITIONS:** "Cash or Company Check" accompanied by current "Bank Letter of Guarantee", made payable to Alex Lyon & Son. Everything Sells "AS IS, WHERE IS." *The following charges will apply on all purchases:* (1.) For each unit \$20,001.00 and above, a 5.95% administration fee will be assessed when paying with cash or good check. (The standard fee of 8.95% will be assessed when paying with credit card). (2.) For each unit \$1,001- \$20,000, a 10% administration fee will be assessed when paying with cash or good check, and a 13% fee will be assessed when paying with credit card. (3.) For each unit \$0- \$1,000, a 12.5% administration fee will be assessed when paying with cash or good check, and a 15.5% fee will be assessed when paying with credit card.



FOR BID ONLINE  
TECHNICAL ASSISTANCE  
CALL (919) 595-2907

## 12 HYDRAULIC EXCAVATORS



(2) 2009 KOBELCO SK210LC Fiat F4GE9684E-J6 diesel engine, 150hp, Cab, air, 31.5in. Pads, digging bucket, long undercarriage.



2013 JOHN DEERE 85G SNLDJ017023 John Deere diesel engine, Cab, air, heat, radio, front blade, long arm, Roadliner pads, quick coupler, 18in. digging bucket, 980 hours. 36in. Digging Bucket Sells Separately.



2011 TEREX TC35E SNTC035E0255 diesel engine, OROPS, front blade, 11ft. 8in. Digging depth, rubber tracks, digging bucket.

(3) 2008 TEREX TC35E diesel engine, OROPS, front blade, 11ft. 8in. Digging depth, rubber tracks, digging bucket.

# AMERICA'S AUCTION COMPANY





**(3) 2006 TEREX HR16** diesel engine, OROPS, front blade, 11ft. 8in. Digging depth, rubber tracks, digging bucket.



**CAT 302.4D** SNLJ600154 diesel engine, OROPS, front blade, pattern changer, auto idle, long arm, rubber tracks, digging bucket with hydraulic thumb, 209 hours.

**THOMAS TS-25S** SNNS2520318 diesel engine, OROPS, front blade, 9ft. 6in. Digging depth, rubber tracks, digging bucket.

## MOTOR GRADERS

**2007 PSI MG618** SN121059 diesel engine, OROPS, 10ft. Moldboard, hydraulic sideshift, TIP control.

**2006 PSI MG618** SN121005 diesel engine, OROPS, 10ft. Moldboard, hydraulic sideshift, TIP control.

## RUBBER TIRED LOADERS



**(2) 2005 TEREX SKL824** diesel engine, 50hp, OROPS, GP bucket.

## 5 TRACTOR LOADER BACKHOES



**(2) 2007 TEREX TX760B** 4x4, diesel engine, OROPS, GP front bucket, rear digging bucket.

**2005 TEREX TX760B** SN05BFM6200 4x4, diesel engine, OROPS, GP front bucket, rear digging bucket.  
**(2) 2012 TERRAMITE T9** 4x4, Kubota diesel engine, ROPS, GP front bucket, rear digging bucket

## TRACTOR LOADER BACKHOE ATTACHMENTS

**2006 TEREX TX1100S** HYDRAULIC HAMMER SNS60100409

**2006 ATLAS COPCO RX4** HYDRAULIC HAMMER SNBES004686

## 9 ASPHALT PAVERS

**2012 PUCKET BROTHERS 580** SN14460704 diesel engine, 8ft.-13ft. Paving width.

**2007 PUCKET BROTHERS 540** SN14050610 diesel engine, 8ft.-12ft. Paving width.



**2005 PUCKET BROTHERS 540** SN13900508 diesel engine, 8ft.-12ft. Paving width.

**2006 BLAW-KNOX PF840** SN120150 diesel engine, 8ft.-13ft. Paving width.

**2006 BLAW-KNOX PF840** SN120293 diesel engine, 8ft.-13ft. Paving width.

**2006 BLAW-KNOX DM5500** SNDM5500-01-122 diesel engine, 5ft-8ft. Paving width.

**2005 BLAW-KNOX DM5500** SNDM5500-01-107 diesel engine, 5ft-8ft. Paving width.

**BLAW-KNOX DM5500** SNDM5500-01-117 diesel engine, 5ft-8ft. Paving width.

**BLAW-KNOX DM5500** diesel engine, 5ft-8ft. Paving width.

## 10 ASPHALT ROLLERS

**HAMM 120 HV** SNH1630330 diesel engine, ROPS, 84in. Smooth drum, double drum, vibratory, drum drive, water system.

**HYPAC C766B** SN209C2111U Cummins diesel engine, OROPS, 66in. Smooth drum, double drum, vibratory drum, drum drive.



**(2) INGERSOLL RAND DD24** Kubota diesel engine, ROPS, 49in. Smooth drum, double drum, vibratory drum, drum drive, water system.

**2007 STONE WP6100** SN52007029 Kubota diesel engine, ROPS, 47in. Smooth drum, double drum, vibratory drum, drum drive, water system.

**STONE WP6400** SN4397003E Kubota diesel engine, ROPS, 47in. Smooth drum, double drum, vibratory drum, drum drive, water system.



**2011 STONE WP3100** SN352008029 ROPS, 39in. Smooth drum, double drum, vibratory drum, drum drive, water system.

**(2) STONE WP3100** ROPS, 39in. Smooth drum, double drum, vibratory drum, drum drive, water system.

**2006 SAKAI PAVINGPRO270** SN10109 gas engine, ROPS, 39in. Smooth drum, vibratory drum, drum drive, water system.

## 3 VIBRATORY ROLLERS

**2005 HAMM 2420 D-CE** SNHM0045989 diesel engine, ROPS, 84in. Smooth drum, vibratory drum, drum drive.

**(2) STONE SD54** diesel engine, ROPS, 54in. Smooth drum, vibratory drum, drum drive.

## PNEUMATIC ROLLERS

**2008 BASIC 700** SN70008225 diesel engine, 51in. Width, 7-wheels.

**2007 BASIC 700** SN70007195 diesel engine, 51in. Width, 7-wheels.

## 3 RUBBER TRACKED SKID STEERS

**2007 MUSTANG MTL16** SN21309067 diesel engine, rollcage, auxiliary hydraulics, mechanical quick coupler, rubber tracks, GP bucket.

**2005 MUSTANG MTL16** SN21306356 diesel engine, rollcage, auxiliary hydraulics, mechanical quick coupler, rubber tracks, GP bucket.

**MUSTANG MTL16** SN20302809 diesel engine, rollcage, auxiliary hydraulics, mechanical quick coupler, rubber tracks, GP bucket.

## 9 SKID STEERS



**2012 GEHL SL4240E** SN4240A00003204 diesel engine, rollcage, auxiliary hydraulics, mechanical quick coupler, GP bucket.



**2006 MUSTANG 2086** SNJ00003357 diesel engine, rollcage, auxiliary hydraulics, mechanical quick coupler, GP bucket.  
**2006 MUSTANG 2086** SNK00002997 diesel engine, rollcage, auxiliary hydraulics, mechanical quick coupler, GP bucket.  
**2007 MUSTANG 2076** SNH00004811 diesel engine, rollcage, auxiliary hydraulics, mechanical quick coupler, GP bucket.  
**2006 MUSTANG 2076** SNP00004104 diesel engine, rollcage, auxiliary hydraulics, mechanical quick coupler, GP bucket.



**2008 MUSTANG 2054** SNT00008184 diesel engine, rollcage, auxiliary hydraulics, mechanical quick coupler, GP bucket.  
**2007 MUSTANG 2054** SNP00007845 diesel engine, rollcage, auxiliary hydraulics, mechanical quick coupler, GP bucket.  
**2006 MUSTANG 2054** SNC00006532 diesel engine, rollcage, auxiliary hydraulics, mechanical quick coupler, GP bucket.  
**2010 MUSTANG 2041** SNT00001016 diesel engine, rollcage, auxiliary hydraulics, mechanical quick coupler, GP bucket.

## MINI TRACK LOADER

**VERMEER 5400TX** SN81000187 gas engine, auxiliary hydraulics, mechanical quick, rubber tracks, GP bucket. Stand on.

## 41 SKID STEER ATTACHMENTS

**2007 FFC LAF5424 COLD PLANER** SNG056545  
**2006 FFC LAF5424 COLD PLANER** SNF051499  
**2007 C.E. A RM72 72IN. MOWER** SN3507  
**(4) NEW 84IN. FORK EXTENSIONS**  
**(4) NEW 72IN. FORK EXTENSIONS**  
**(2) NEW 2 YARD TRASH HOPPER** skid steer mount.  
**(2) NEW 3/4 CUBIC YARD CONCRETE PLACEMENT BUCKET**  
**(8) NEW ATTACHMENT FRAME**  
**(5) GRAPPLE BUCKET**  
**(5) GP BUCKET**  
**(5) BOOM**  
**(2) NEW JBX 4000 48IN. PALLET FORKS**  
**(2) NEW 12 X 16.5 12PLY TIRES**

## 6 TRENCHERS

**2005 CASE 460** SNJAF0225691 4x4, diesel engine, OROPS, push blade, trencher.  
**VERMEER V3550A** SN001866 4x4, diesel engine, OROPS, push blade, trencher.  
**2006 VERMEER RT100** VN001326 gas engine, 24in. X 4in. Trencher.  
**2013 TORO TRX-16** SN313000108 gas engine, trencher, track mounted.

**BARRETO 1324-4** SND2299 gas engine, 30in. X 4in. Trencher.  
**BARRETO 1324D** SND2211 gas engine, 30in. X 4in. Trencher.

## 14 TELESCOPIC FORKLIFTS



**2005 SKYTRAK 10054** SN13997 4x4, diesel engine, OROPS, 10,000lb lift capacity, 54ft. Reach height, front stabilizers.  
**(4)2007 SKYTRAK 8042** 4x4, diesel engine, OROPS, 8,000lb lift capacity, 42ft. Reach height.



**2005 SKYTRAK 6042** SN0160015272 4x4, diesel engine, OROPS, 6,000lb lift capacity, 42ft. Reach height.



**2005 GRADALL 534D10-45** SN1999-366146 4x4, diesel engine, OROPS, 10,000lb lift capacity, 45ft. Reach height, front stabilizers.



**2006 MUSTANG DL844** SN844JX0590162 4x4, diesel engine, OROPS, 8,000lb lift capacity, 44ft. Reach height.  
**(3) 2006 MUSTANG DL634** 4x4, diesel engine, OROPS, 6,000lb lift capacity, 34ft. Reach height.  
**2014 GEHL RS5-34** SNRS5JX0512552 4x4, diesel engine, OROPS, 5,500lb lift capacity, 34ft. Reach height.

**2007 GENIE GTH5519** SN15476 4x4, diesel engine, OROPS, 5,500lb lift capacity, 19ft. Reach height.  
**2005 TEREX TX5519** SN13241 4x4, diesel engine, OROPS, 5,500lb lift capacity, 19ft. Reach height.

## PIGGY BACK FORKLIFT

**TELEDYNE D50** SN575811 diesel engine, OROPS, 6,000lb lift capacity, 3-wheel.

## 3 FORKLIFTS

**YALE** SND467276 LP engine, OROPS, 8,000lb lift capacity, 3-stage.  
**CLARK GCS25** LP engine, OROPS, 5,000lb lift capacity.  
**2013 HELI CBD20-150** SN080207A3168 electric powered, OROPS, 4,500lb lift capacity.

## 18 BOOM LIFTS

**2012 GENIE S85** SNS8006-4740 4x4, diesel engine, 85ft. Platform height, straight boom, 500lb lift capacity.  
**GENIE S65** SNS6000-6492 4x4, diesel engine, 65ft. Platform height, straight boom, 500lb lift capacity.



**2009 GENIE Z60/34** SNZ6005-4905 4x4, diesel engine, 60ft. Platform height, articulating boom, 500lb lift capacity.

**2009 GENIE S60** SNS6000-6492 4x4, diesel engine, 60ft. Platform height, straight boom, 500lb lift capacity.  
**2005 GENIE S60** SNS6005-11800 4x4, diesel engine, 60ft. Platform height, straight boom, 500lb lift capacity.  
**2005 GENIE S60** SNS6005-11135 4x4, diesel engine, 60ft. Platform height, straight boom, 500lb lift capacity.  
**2015 GENIE S45** SNS4515-20603 4x4, diesel engine, 45ft. Platform height, straight boom, 500lb lift capacity.

**2005 GENIE S45** SNS4505-9269 4x4, diesel engine, 45ft. Platform height, straight boom, 500lb lift capacity.

**2008 GENIE Z-45/25** SNZ452508A-006569 4x4, dual fuel engine, 45ft. Platform height, articulating boom, 500lb lift capacity.

**GENIE Z-34/25** SNZ452504-22899 4x4, dual fuel engine, 34ft. Platform height, articulating boom, 500lb lift capacity.

**GENIE Z-34/25** SNZ45-01274 4x4, dual fuel engine, 34ft. Platform height, articulating boom, 500lb lift capacity.

**2008 GENIE Z-34/22** SNZ3406-4788 4x4, dual fuel engine, 34ft. Platform height, articulating boom, 500lb lift capacity.

**GENIE Z-34/22** SNZ45-5267 4x4, electric powered, 34ft. Platform height, articulating boom, 500lb lift capacity.



**JLG 800A** SN300045829 4x4, diesel engine, 80ft. Platform height, articulating boom, 500lb lift capacity.

**2008 JLG 400S** SN119072 4x4, diesel engine, 40ft. Platform height, straight boom, 500lb lift capacity.

**TEREX TB44** SN98610173 4x4, diesel engine, 44ft. Platform height, straight boom, 500lb lift capacity.



**SNORKEL TB-37RDZ** SN985071 4x4, diesel engine, 37ft. Platform height, straight boom, 500lb lift capacity.

**NIFTY TD34TN** SN423626 diesel engine, 34ft. Platform height, rubber tracks, 265lb lift capacity.

## 20 SCISSOR LIFTS



**2015 JLG 500RTS** SN200109603 4x4, diesel engine, 50ft. Platform height, slide out deck, rough terrain tires.

**JLG 40RTS** SN200026778 4x4, dual fuel engine, 40ft. Platform height, slide out deck, rough terrain tires.

**2006 JLG 33RTS** SN200069857 4x4, dual fuel engine, 33ft. Platform height, slide out deck, rough terrain tires.

**2006 JLG 33RTS** SN200052564 4x4, dual fuel engine, 33ft. Platform height, slide out deck, rough terrain tires.

**JLG 1932-E2** SN0200075507 electric powered, 19ft. Platform height, slide out deck, 500lb lift capacity.

**2013 SKYJACK SJ4632** SN716161 electric powered, 32ft. Platform height, slide out deck, 500lb lift capacity.

**SKYJACK SJIII 4632** SN715510 electric powered, 32ft. Platform height, slide out deck, 500lb lift capacity.

**2010 GENIE GS2632** SN48132 electric powered, 26ft. Platform height, slide out deck, 500lb lift capacity.

**2013 GENIE GS1930** SN3005A-077849 electric powered, 19ft. Platform height, slide out deck, 500lb lift capacity.

**2013 GENIE GS1930** SN3005B-076293 electric powered, 19ft. Platform height, slide out deck, 500lb lift capacity.

**2013 GENIE GS1930** SN3005B-076201 electric powered, 19ft. Platform height, slide out deck, 500lb lift capacity.

**2011 GENIE GS1930** SN3005-70613 electric powered, 19ft. Platform height, slide out deck, 500lb lift capacity.

**2009 GENIE GS1930** SN3007B84175 electric powered, 19ft. Platform height, slide out deck, 500lb lift capacity.

**2009 GENIE GS1930** SN3007B84163 electric powered, 19ft. Platform height, slide out deck, 500lb lift capacity.

**2008 GENIE GS1930** SN3008B091277 electric powered, 19ft. Platform height, slide out deck, 500lb lift capacity.

**2008 GENIE GS1930** SN3008B091277 electric powered, 19ft. Platform height, slide out deck, 500lb lift capacity.

**2008 GENIE GS1930** SN3005-68389-WPB electric powered, 19ft. Platform height, slide out deck, 500lb lift capacity.

**2005 STRATO-LIFT SB35R** SN002043 electric powered, 35ft. Platform height.

**SNORKEL SL20SL** SN1998/980477 electric powered, 20ft. Platform height, slide out deck, 500lb lift capacity.

**2006 SNORKEL S1930** SNJA06173 electric powered, 19ft. Platform height, slide out deck, 500lb lift capacity.

## 7 AIR COMPRESSORS



**(2)2007 AIRMAN PDS185S** diesel engine, 185CFM, trailer mounted.

**(5)2006 AIRMAN PDS185S** diesel engine, 185CFM, trailer mounted.

## 13 GENERATORS



**2009 TEREX T360C** SNT360C-000002 diesel engine, 360kva, trailer mounted.



**2006 TEREX T270C** SNGOG-24659 diesel engine, 270kva, trailer mounted.

**2007 TEREX T270C** SNGOG-26157 diesel engine, 270kva, trailer mounted.



**2007 TEREX T120-P** SNGUG-25791 diesel engine, 120kva, trailer mounted.

**2007 TEREX T120-P** SNT12007-25790 diesel engine, 120kva, trailer mounted.

**2005 TEREX T90SQ-P** SNFUG-17104 diesel engine, 90kva, trailer mounted.

**2006 TEREX T70P** SNGRG-21378 diesel engine, 70kva, trailer mounted.

**2006 TEREX T70J** SNFQG-17696 diesel engine, 70kva, trailer mounted.

**2011 TEREX T50** SNGSG-22950 diesel engine, 50kva, trailer mounted.

**TEREX T50-SQ** SNGRG-21524 diesel engine, 50kva, trailer mounted.

**2006 TEREX T25SQ** SNFUG-17128 diesel engine, 25kva, trailer mounted.



**2006 TEREX T25G** SNGGG-19215 diesel engine, 25kva, trailer mounted.



**INGERSOLL RAND 75KVA** SN315874UIK783 diesel engine, 75kva, trailer mounted.

## WELDER

**LINCOLN SAE400** SNU1990110721 400AMPS.

## 16 LIGHT PLANTS

**(2)2011 GENIE TML-4000N** diesel engine, 4-1,000 watt lightbulbs, 6KW, trailer mounted.

**(5)2008 TEREX RL4000** diesel engine, 4-1,000 watt lightbulbs, 6KW, trailer mounted.





**(6)2007 TEREX RL4060D1-4MH** diesel engine, 4-1,000 watt lightbulbs, 6KW, trailer mounted.

**(2)2005 TEREX RL4060D1-4MH** diesel engine, 4-1,000 watt lightbulbs, 6KW, trailer mounted.

**2005 TEREX RL4060D1-4MH** SNF0F-16051 diesel engine, 4-1,000 watt lightbulbs, 6KW, trailer mounted.

## INGERSOLL RAND LIGHT SOURCE

SN344542UC0789 diesel engine, 4-1,000 watt lightbulbs, 6KW, trailer mounted.

## ARROW/MESSAGE BOARD

ALLMAND ARROW BOARD SN0174AB10

## TRACTOR LOADER



**2008 KUBOTA L4330HST-F** SN38585 4x4, Kubota diesel engine, ROPS, GP front loader, 3pt hitch, PTO.

## TRACTOR ATTACHMENT

**2008 KUBOTA SBX72** 72IN. BOX BLADE SN12-02834

## 2250 SCAFFOLDING

**(750) BIL JAX SCAFFOLDING** 5FT. & 6FT. WALK THRU, SIDE STEP

**(500) SCAFFOLDING BOARDS** 12IN. X 16FT, 12IN. X 8FT.

**(1000) QTY OF SCAFFOLDING ACCESSORIES** casters, base plates, braces, leveling jacks, guard rails, etc.

## WOOD CHIPPER

**MORBARK** SN667 gas engine.

## 4 STUMP GRINDERS

**2012 VERMEER SC 652** SN1VR7122N9C10000237 diesel, 65hp, self propelled.

**2010 VERMEER SC 252** SN1VR7122N9C10000237 gas engine.

**2015 TORO STX 26** SN315000186 gas engine.

**2013 TORO STX 26** SN313000121 gas engine.

## 7 CONCRETE EQUIPMENT

**2014 MULTIQUIP MM905H8** MORTAR MIXER SN11357474 gas engine, trailer mounted.

**2014 MULTIQUIP MORTAR MIXER** SN11357498 gas engine, trailer mounted.

**2005 STONE LJ100** BLOCK BUGGY SN302005748

**STONE 464H 46IN. POWER TROWEL**

SN122005057

**2007 STONE CF364 36IN. POWER TROWEL**

SN072005012

**2005 STONE 25CMP CONCRETE MIXER**

SN412004293



**2006 STOW MS93H** MORTAR MIXER

SNSAD756204

## 5 SWEEPERS



**(4)2005 LAY-MOR 8HC** diesel engine, OROPS, 8ft. Broom, water system.



**2005 TERRAMITE TSS38** SN21TS0123 diesel engine, OROPS, 8ft. Broom, water system.

## WATER TRUCKS



**2000 FREIGHTLINER CENTURY CLASSIC**

VNN/A Cummins ISM diesel engine, Rockwell 10 speed transmission, power steering, 4000 gallon water tank, Rainmaker PTO, 5-spray heads, air ride suspension, tandem axle.

**GMC C7500** VN513471 diesel engine, power steering, 2000 gallon tank, dual wheel single axle.

## FLATBED TRUCKS

**2005 FORD 550XL SUPER DUTY** VNC57477 diesel engine, power steering, flatbed body, dual wheel single axle.

**1997 GMC** VN700067 diesel engine, power steering, flatbed body with side lift gate, dual wheel single axle.

## DUMP TRUCK

**1999 STERLING** VN985864 diesel engine, power steering, dump body, dual wheel single axle.

## DETACHABLE GOOSENECK TRAILER

**2007 WITZCO RN-35** VN000407 35 ton capacity, 8ft. 5in. X 46ft. Deck, tandem axle.

## EQUIPMENT TRAILER

**2005 LANDOLL 930-51-15** VNA14160 8ft. 5in. X 51ft. 3in. Deck, tandem axle.

## 13 TAGALONG TRAILERS



**2012 ANDERSON HGL10614** VN067814 6ft. X 14ft. Deck, tandem axle.

**2012 ANDERSON HGL10614** VN067815 6ft. X 14ft. Deck, 10,000lb capacity, tandem axle.

**2006 ECONOLINE 18FT. TRAILER** VN000173 18ft. deck, ramps, tandem axle.

**2015 EZ-DUMPER** VN085831 6ft. 4in. X 11ft. 5in. Deck, tandem axle.

**2010 TOWMASTER T12DD** VN160605 9ft. X 6ft. 5in. Deck, tandem axle.

**2009**

**1014** VN001263 5ft. 10in. X 14ft. Deck, tandem axle.

**2008 BETTER BUILT 6X10STE** VN002156 6ft. 6in. X 10ft. Deck, 5 ton capacity, tandem axle.

**2012 10 TON** VN383696 20ft. X 6ft. 8in. Deck, 10 ton capacity, tandem axle.

**2010 6 TON** VN003011 8ft. X 18ft. Deck, 6 ton capacity, tandem axle.

**2004 ECONO MG1228PE** VN000352 8ft. X 28ft. Body, tandem axle.



**2000 BUTLER 1BUD1420XU10** VNLT1014 6ft. 8in. X 16ft. Deck, tandem axle.

**2000 HAULMARK** VN012602 8ft. X 28ft. Body, tandem axle.

**2003 TRAIL** VN001042 8ft. X 28ft. Body, tandem axle.



## UTILITY TRAILERS

HORIZON TRENCHER TRAILER VNN/A  
1998 VERMEER TRAILER VN433

## 6 UTILITY VEHICLES



(3) 2008 KAWASAKI 600 gas engine, utility body.  
(2) 2007 KAWASAKI 610/KAF400A7 4x4, gas engine, utility body.  
2010 TAYLOR DUNN SNRO-390-36 electric powered, utility body.

## 6 SCRAP RECYCLING EQUIPMENT

(2) NEW 2 YARD SELF DUMPING HOPPER 4,000lb capacity.  
(2) NEW 1.5 YARD STACKABLE SELF DUMPING HOPPER 4,000lb capacity.  
(2) NEW 1 YARD STACKABLE SELF DUMPING HOPPER 4,000lb capacity.

## 6 HEATING EQUIPMENT

(2) 2012 PROPANE HEATER  
(2) 2010 PROPANE HEATER

## PRESSURE WASHERS

(2) 4000PSI PRESSURE WASHER

## 50 NEW SUPPORT EQUIPMENT

(3) NEW MUSTANG MP4800 2IN. SUBMERSIBLE PUMP  
(4) NEW MUSTANG LF88 PLATE COMPACTOR  
(2) NEW MUSTANG CV3500 CONCRETE VIBRATOR  
(4) NEW 1/2IN. DRIVE AIR IMPACT WRENCH KIT  
(6) NEW 2IN. X 50FT. DISCHARGE WATER HOSES  
(8) NEW 3PC 14IN. PREMIUM DIAMOND BLADES  
(2) NEW HUSKIE 11218 SDS HAMMER DRILL  
(4) NEW AUTO DARKENING WELDING HELMET  
(2) NEW 3/8IN. X 50FT. AUTOMATIC AIR HOSE REEL  
(4) NEW 25FT. 800AMP EXTRA HD BOOSTER CABLES  
NEW 1IN. DRIVE AIR IMPACT WRENCH  
(2) NEW 4-PACK 10,000LB RATCHET CARGO STRAPS  
(2) NEW 29.5IN. X 90IN. WELDING TABLE  
(4) NEW 30IN. X 57IN. WELDING TABLE  
(2) NEW 3/8IN. AR500 DUELING TREE SHOOTING TARGET

## 71 SUPPORT EQUIPMENT

2016 STIHL MS271 20IN. CHAINSAW SN504909479  
2016 STIHL MS271 20IN. CHAINSAW SN505275882  
2014 STIHL MS290 20IN. CHAINSAW SN289728061  
2014 STIHL MS290 20IN. CHAINSAW SN292299904  
2012 STIHL MS290 20IN. CHAINSAW SN289452361  
2011 STIHL MS290 20IN. CHAINSAW SN283933939  
2006 STIHL MS290 20IN. CHAINSAW SN268806164  
2015 STIHL MS291 18IN. CHAINSAW SN243830455  
2014 STIHL MS291 18IN. CHAINSAW SN298760315  
STIHL TS400-14 CUTOFF SAW SN155446248 gas engine.  
STIHL TS400-14 CUTOFF SAW SN156306804 gas engine.  
STIHL TS400-14 CUTOFF SAW SN156308258 gas engine.  
2011 STIHL BG-55 BLOWER SN284354437 gas engine.  
2011 STIHL BG-55 BLOWER SN284354445 gas engine.  
2016 STIHL BR500 BACKPACK BLOWER SN505402686 gas engine.  
2011 STIHL HS81R 30IN. HEDGE TRIMMER SN28070946  
STIHL FC-90 EDGER SN255071334

2008 MITSUBISHI N-300H 3IN. DIAPHRAGM PUMP SND0706273  
MITSUBISHI N-300H 3IN. DIAPHRAGM PUMP SND03050613  
MITSUBISHI BTR-400S 2IN. SUB PUMP SN0943-288  
STONE CS2 WALKBEHIND SAW SN162002317 gas engine.  
STONE STONE 1.5 CONCRETE VIBRATOR SNT126185



2013 TORO 23515 AERATOR SN312000247  
2013 TORO 23518 AERATOR SN313000128  
2013 TORO STX-26 STUMP GRINDER SN313000120  
SULLAIR MCH-3 15LB AIR HAMMER SN165009  
2006 WINCO WL18000VE GENERATOR SN111763

2007 ICS 613GC-12 CONCRETE SAW SN716191946 gas engine.  
2007 ICS 613GC-12 CONCRETE SAW SN716191949 gas engine.  
2006 ICS 613GC-12 CONCRETE SAW SN714477436 gas engine.  
2012 LITTLE 9270-02-01 BLOWER SN1120001596 gas engine.  
2006 LITTLE LL 1301-0001 BLOWER SN1050609424  
2012 ELECTRIC MODEL R SNAKE SN12563 3/4in. X 8  
2012 ELECTRIC MODEL E SNAKE SN12441 1/2in. X 5  
ELECTRIC MODEL S SNAKE SN16142 3/8in. X 1  
2012 BLUEBIRD SG1314B STUMP GRINDER SN120100144  
BLUEBIRD SG1314 STUMP GRINDER SN31500183  
2007 DIAPRO WEKA 12 CORE DRILL SN906026  
2007 DIAPRO DK1203 WEKA CORE DRILL SN706388  
2007 DIAPRO M1 CORE DRILL SN748-4825  
2013 ERMATO HEPA VAC SN0900249A0113  
2006 MI-T-M AC2-PH08-20M AIR COMPRESSOR SN20033207  
2007 EDCO 2GC6-11H CONCRETE GRINDER SN20456 gas engine.  
2006 EDCO CPM8-9H SCARIFIER SN051210130  
2013 NATL FLOOR 5625 FLOOR STRIPPER SN5625-2045  
2010 HUSQVARNA 700DRT REAT TINE TILLER SN409T001178  
2013 PEARL VX10XLPRO TILE SAW SN7102126  
2006 NAC NGK-6000H 6000 WATT GENERATOR SNH0019485  
2005 HITACHI H60MB HAMMER SN40025  
2011 GENIE AWP SUPER ST SNSS11-003592  
2008 SQ172 SN12-07907  
(4) POWER ZONE 2000W LIGHT STAND  
(2) POWER ZONE 1000W LIGHT STAND  
GENERAL GP8 MAN HOLE BLOWER SN31262 gas engine.  
NAC NGK-6000H 6000 WATT GENERATOR SNH0018914 gas engine.  
SAKAI MMP800 PLATE COMPACTOR SN10624  
MULTIQUIP MVC88VTHW PLATE COMPACTOR SNT2Y1509  
GENERAL M210 POST HOLE DIGGER SN46124  
CLASSEN SC18 SOD CUTTER SN001671  
BERGER 135 BUILDERS LEVEL SN108337  
DRY AIR CARPET BLOWER SNUITA1A2003111138  
DRY AIR CARPET BLOWER SN2465  
3M APPLIANCE DOLLY SN0001  
FLOOR BUFFER SNB452006  
BOSCH 1276 BELT SANDER SN8680275  
MARSHA HC128A TEXTURE SPRAYER SNA32911792  
2011 TRACTOR HITCH SNW001 - WPB



Like us on  
**Facebook**





**ALEX  
LYON  
& SON**  
SALES MANAGERS  
& AUCTIONEERS

# AUCTION CALENDAR

**ALL THE FOLLOWING AUCTIONS WILL BE AVAILABLE TO**



1. Saturday, October 15: **CHICAGO (FRANKFORT), ILLINOIS:** Snow Extravaganza PHASE 3. Final Phase for 2016. (45) Rubber Tired Loaders, All 2016-2015 Cat 926M, Cat 924K, Cat 908, Cat 907, Case 621F, (2) Case 221F, JCB 409, JCB 407, Cat Hydraulic Excavators, (20) Cat Skid Steers, Cat Loader Backhoes, (3) 2014 Cat 725C Articulated Trucks, Lite Plants, Salt Trucks, Snow Pickup Trucks, Snow Blades, Snow Plows, PLUS MUCH MORE. All Machines Very, Very Low Houred (50-70hrs.) from the Largest Snow Removal People in the World. This will be the Largest Sale of its Kind Anywhere in the World.
2. Friday, October 21: **MANCHESTER, NEW HAMPSHIRE:** Complete Liquidation (15) Telescopic Forklifts, (5) Warehouse Forklifts, (35) Boom & Scissor Lifts, Air Compressors, Welders, Generators, (10) Light Plants, Skid Steers, Rubber Tired Loaders, Loader Backhoes, Support, Attachments, Large Quantity New JLG Parts.
3. Friday, October 21: **QUERETARO, MEXICO:** Late Model Cat, Case, John Deere Earthmoving Equipment, Aerial Lifts, Forklifts, Trucks and Trailers, Support, Attachments.
4. Saturday, October 22: **ROCHESTER (DANSVILLE), NEW YORK:** Large Municipal Cat & John Deere Construction Equipment, Support, Attachments, Truck Tractors, Dump Trucks, Trailers. **HILITES:** (4) 2016 Cat 926M, 2014 Cat 924K, (4) 2016-2015 Cat 262D, (2) 2010 KOBELCO SK200LC, (10) 2016 Tagalongs, (10) 2010 Magnum Light Plants, Agricultural Tractors.
5. Thursday, October 27: **AMARILLO, TEXAS:** Complete Liquidation. Secured Creditors Auction. **HILITES:** Jaw and Impact Crushers, Screens, Conveyors, Crawler Tractors, Rubber Tired Loaders, Motor Graders, Articulated Dump Trucks, Rotary Mixers, Tractor Loader Backhoes, Vibratory Rollers, Mack Truck Tractors, Water Trucks, Dump Trucks, Service Trucks, Belly Dump Trailers, Tag Trailers, Cargo Trailers, Pickup Trucks, Generators and much more including Attachments and Support Equipment.
6. Friday, October 28: **KISSIMMEE (WINTER GARDEN), FLORIDA:** Rental Return of Late Model Construction Equipment, (10) Late Model Kobelco SK210LCs, Cat, Komatsu, John Deere, JLG and Genie Aerial Lifts, JLG and Skytrack Telescopes PLUS Air Compressors, Welders, Lite Plants, Truck Tractors, Dump Trucks, Equipment Trailers, (28) Skid Steers.
7. Saturday, October 29: **WEST PALM BEACH, FLORIDA:** Rental Fleet Equipment Auction One Owner, Very Nice Midi and Mini Construction Equipment, Attachments, Tools, Support Equipment.
8. **NEW DATE** – Saturday, November 5: **BOSTON (PLYMOUTH), MASSACHUSETTS:** Late Model Snow Equipment. Rubber Tired Loaders, Cat, Case, JCB, Snow Trucks, Pickups, Snow Accessories, Earthmoving Equipment, Skid Steers, Crawler Tractors, Air Compressors, Welders, Light Plants, Support Equipment.
9. Tuesday, November 8: **HOUSTON, TEXAS:** Late Model Construction Equipment, Cranes, Aerial Lifts, Forklifts, Trucks & Trailers, Attachments and Support.
10. Saturday, November 12: **AUGUSTA, MAINE:** 2 Complete Liquidations Construction Equipment, Trucks, Trailers, Attachments, Support Equipment and Complete Water Well Drilling Estate.
11. Friday, November 18: **WOOSTER, OHIO:** Rental Fleet Equipment. Cat, John Deere, Bobcat, Komatsu Hydraulic Excavators, Rubber Tired Loaders, Crawler Tractors, Booms, Scissors, Skid Steers, Forklifts, Light Plants, Air Compressors, Generators, Tagalongs, Attachments, Support Equipment.
12. Saturday, November 19: **ATTLEBORO, MASSACHUSETTS:** Late Model Bucket Trucks, Digger Derrick Trucks, Boom Trucks, Service Trucks, Vans, Pickups, Truck Tractors, Dump Trucks, Light Plants, Generators, Welders, Air Compressors, Forklifts, Boom & Scissor Lifts, Rubber Tired Loaders, Loader Backhoes, Skid Steers and Attachments.
13. Monday, November 21: **WOODSTOCK, ONTARIO: 2-DAY AUCTION, DAY 1:** Very Large Late Model Agricultural and Construction Equipment Auction. Farm Tractors and Agricultural Implements, Haying, Forage and Tillage Equipment, Lite Construction Equipment, Support and More.
14. Tuesday, November 22: **WOODSTOCK, ONTARIO: 2-DAY AUCTION, DAY 2:** Very Large Late Model Agricultural and Construction Equipment Auction. Farm Tractors and Agricultural Implements, Haying, Forage and Tillage Equipment, Lite Construction Equipment, Hydraulic Excavators, Skid Steers, Tractor Loader Backhoes, Crawler Tractors, Support and More.
15. **NEW DATE** – Saturday, November 26: **CANASTOTA, NEW YORK:** Late Model Rental Fleet Construction Equipment, Aerial Lifts, Forklifts, Snow Equipment, Support, Attachments, Trucks & Trailers.
16. Tuesday, November 29: **DALLAS (FT. WORTH), TEXAS:** Rentals, Rentals, Rentals. Construction Equipment, Forklifts, Aerials, Trailers, Attachments. **HILITES:** (4) Kobelco SK210LC.
17. Thursday, December 1: **SAN ANGELO, TEXAS:** Rental Fleet Construction Equipment, Large Quantity Hydraulic Excavators, Aerials, Forklifts, Light Plants, Skid Steers, Attachments, Support, Trucks & Trailers.
18. Friday, December 2: **BOSTON, MASSACHUSETTS:** One Owner Liquidation. Save This Date. Something Very Special.
19. **NEW DATE** – Tuesday, December 6: **JOHNSTOWN, PENNSYLVANIA:** Large Cat, Komatsu, John Deere, Euclid, Mining and Construction Equipment, Trucks, Trailers, Attachments, Support Equipment.
20. Friday, December 9: **VIENNA, WEST VIRGINIA:** Unbelievable Very Late Model Oil Field Trucks (years up to 2013), Late Model Cat Construction and Oil Field Equipment (years up to 2015), Attachments and Support.
21. Saturday, December 10: **LAS VEGAS, NEVADA:** Large Job Completion and Rental Returns-2 Auctions in One Day. Late Model Construction, Utility Equipment, Telescopic Forklifts, Warehouse Forklifts, Booms and Scissors, Hydraulic Excavators, Loader Backhoes, Rubber Tired Loaders, Air Compressors, Welders, Generators, Utility Vehicles, (25) JD, Kawasaki, Kubota 4-Wheelers.
22. Friday, December 16: **MANASSAS, VIRGINIA:** Late Model Cat Construction Equipment, Kenworth and Peterbilt Dump Trucks, Pickups, Aerials, Attachments, Support Equipment.
23. Saturday, December 17: **ATLANTIC CITY, NEW JERSEY:** Rentals, Rentals, Rentals- Cat, Case, Komatsu, John Deere Construction Equipment, Aerials, Forklifts, Trucks, Trailers, Attachments, Support. **HILITES INCLUDE:** Over 20 2016 Cat 926M Rubber Tired Loaders, (10) 2016 Cat 262D Skid Steers from Arctic Snow & Ice Control.
24. Friday, December 30: **ALBANY (GREENWICH), NEW YORK:** Final Auction of the Year. Rental Returns. Late Model New Holland, Cat, John Deere Construction Equipment and Telescopic Forklifts, Booms & Scissors, Attachments, Tools, Trucks and Trailers.
25. Saturday, January 7: **LONG ISLAND, NEW YORK:** Late Model Construction Equipment, Cat, Komatsu, Case, Truck Tractors, Dump Trucks, Pickups, Support Equipment.
26. Sunday, January 8: **SYRACUSE, NEW YORK:** Light Construction Skid Steers, Mini Excavators, Forklifts, Attachments, Large Quantity New Electric Motors, Large Quantity Racking and Shelving, Support Equipment, New Buildings and Tents.
27. Saturday, January 14: **COLUMBUS (DELAWARE), OHIO:** Very Late Model Cat, Case, Komatsu, Bobcat Rental Fleet Construction Equipment, Aerials, Forklifts, Truck Trailers, Support Equipment & Attachments.
- 28-36. Saturday, January 28 to Sunday, February 5: **THE 24TH ANNUAL 9-DAY FLORIDA AUCTION:** Where the Best Equipment is the Norm, not the Exception. The Greatest Auction On Planet Earth. Primarily selling 2015-2016 Construction, Aerial Equipment, Trucks and Trailers.
39. **DTBA: LAS VEGAS, NEVADA:** Late Model Rental Fleet Construction Equipment, Aerial Lifts, Forklifts, Attachments, Support Equipment, Trucks & Trailers.



## MAIN OFFICE

315.633.2944 • 315.633.2872 • 315.633.9544  
EVENINGS: (315) 637-8912, FAX: (315) 633-8010

## BRANCH OFFICES

ATLANTA, GA	770.537.7386	MEMPHIS, TN	901.410.2549
BALTIMORE, MD	443.529.9870	MOBILE, AL	251.510.1538
	410.792.0008	NASHVILLE, TN	615.988.6665
BRATTLEBORO, VT	802.490.7894	NEW LONDON, CT	860.924.7735
CHARLOTTE, NC	704.626.1963	NEWBURGH, NY	813.777.3273
CHICAGO, IL	312.724.5474	OKLAHOMA CITY, OK	405.652.1441
COLUMBUS, OH	614.254.5596	PARKERSBURG, WV	304.699.3050
DALLAS, TX	972.725.7761	PROVIDENCE, RI	401.258.4850
DENVER, CO	720.634.7068	RACINE, WI	262.886.2778
DES MOINES, IA	515.724.7364	ST. LOUIS, MO	314.300.9825
FORT WAYNE, IN	260.222.0992		314.570.4127
FORT WORTH, TX	817.807.2761	TAMPA, FL	863.660.4203
HARRISBURG, PA	717.836.0919	TUSCALOOSA, AL	205.454.4646
HOUSTON, TX	832.450.3910	WASHINGTON, DC	202.888.6003
LAS VEGAS, NV	702.956.8090	WORCESTER, MA	774.243.0896
MANASSAS, VA	571.358.8931		

**FINANCING AVAILABLE FOR PRE-APPROVED PURCHASERS:** You must have prior written approval! Contact one of the following companies No Later Than One Week Prior to Sale for terms and eligibility requirements.

**FINANCING AVAILABLE BY:**



**CONTACT:** Lori Maxon - Vice President, Equipment Finance **PHONE:** 518-669-9740 **EMAIL:** Lori.Maxon@fnfg.com  
**TERMS:** 12 to 84 months. 100% financing or leasing is available (\$15,000 min) Also available on line at [www.fnfg.com/SmallBusinessLending/EquipmentFinancing](http://www.fnfg.com/SmallBusinessLending/EquipmentFinancing). First Niagara currently provides Equipment Financing/ Leasing in the following states: Connecticut, Delaware, Maine, Maryland, Massachusetts, New Hampshire, New Jersey, New York, Ohio, Pennsylvania, Rhode Island, Vermont, West Virginia, Northern Virginia and Washington, D.C.  
**SMART BUSINESS CREDIT & LEASING:** For instant credit approvals, contact Customer Service at 800.798.6862, or visit our on-site trailer at select auctions. Also available is a secure online application: [www.SmartBusinessCredit.com](http://www.SmartBusinessCredit.com) 100% financing or leasing & customized financial packages available (\$10,000 minimum).  
**NOTICE:** Policy for international Buyers: all international buyers must provide a current, valid passport for identification purposes and a \$10,000.00 deposit. The deposit must be made with US funds in form of cashier's check or wire transfer.  
**SALES TAX:** All sales are subject to sales tax.  
**SALES TAX EXEMPTIONS:** Buyers with a VALID exemption certificate are not required to pay sales tax for equipment and miscellaneous, but MUST present a copy of their certificate at time of registration at EACH SALE.  
**EXPORTERS:** If you take possession of your purchase in the United States, you must pay sales tax. You must provide the following in order not to be charged: Bill of Lading - All export purchases must be removed by a trucking company. The trucking company will provide a Bill of Lading with the purchases listed.  
**NOTE:** No items will be released without this document or you may pay tax and be reimbursed once the Bill of Lading or a Dock Receipt is received.  
**MOTOR VEHICLES AND TRAILER EXEMPTIONS:** Specific for each state. Please call office for exemption details.



7697 ROUTE 31, PO BOX 610  
BRIDGEPORT, NY 13030

ADDRESS SERVICE REQUESTED

PRESORT  
FIRST CLASS  
U.S. POSTAGE  
PAID  
ROCHESTER, NY  
PERMIT No. 944

All information contained in this brochure was derived from sources believed to be correct, but not guaranteed. We shall not be held liable for any typographical errors or inaccuracies in the content of this brochure. All announcements made day of sale supercede any printed material.



PLEASE SCAN  
QR CODE  
FOR UP-TO-DATE  
CALENDAR AND  
EQUIPMENT LISTS

**AMARILLO, TEXAS**  
**THURSDAY, OCTOBER 27<sup>TH</sup> AT 9:30 AM**

## SECURED CREDITORS AUCTION, COMPLETE LIQUIDATION B&B SOLVENT, LLC

**CONSTRUCTION, AGGREGATE  
EQUIPMENT, TRUCK TRACTORS, DUMP  
TRUCKS, BELLY DUMP TRAILERS,  
PICKUPS & SERVICE TRUCKS**



**KISSIMMEE (WINTER GARDEN), FLORIDA**  
**FRIDAY, OCTOBER 28<sup>TH</sup> AT 10:00 AM**

## RENTAL FLEET CONSTRUCTION, AERIALS, FORKLIFT, TRUCK & TRAILER AUCTION



NEFF RENTAL



UNITED RENTALS



**WEST PALM BEACH, FLORIDA**  
**SATURDAY, OCTOBER 29<sup>TH</sup> AT 10:00 AM**

## ACQUISITION AUCTION DISCOUNT EQUIPMENT

**RENTAL FLEET  
CONSTRUCTION, AERIAL  
LIFTS, SUPPORT,  
ATTACHMENT AUCTION**

