

PUBLIC WEBCAST AUCTION

BY ORDER OF OWNER: PRECISION AEROSPACE MANUFACTURER

BID LIVE ONSITE OR BID ONLINE

PRECISION AEROSPACE MANUFACTURER

AUCTION: TUESDAY, OCTOBER 1, 11:00 AM PDT

INSPECTION: MONDAY, SEPTEMBER 30, 8:00 AM - 4:00 PM PDT AND MORNING OF SALE

INSPECTION LOCATION: 2220 S. ANNE ST., SANTA ANA, CA 92704

8-AXIS MILLTURN LATHE



FULL 4TH AXIS



**2008 OKUMA MILL TURN CENTER,
2004 MORI SEIKI, NH4000DCG, 2006
FANUC ALPHA 1A, (2) MORI SEIKI
MV55'S, 12 PALLET MORI SEIKI
MH500 WITH 120ATC, (10) MORI SEIKI
LATHES, (2) FADAL 4020'S, MAKINO
HORIZONTALS, (4) MORI SEIKI VMS,
CMM'S AND INSPECTION EQUIPMENT,
AND MUCH MUCH MORE.**



MACHINERY RESOURCES INTERNATIONAL, INC.

www.machineryresources.com

1650 Voyager Ave., Simi Valley, CA 93063

Tel: 877-568-2121 info@mriauctions.com

LOS ANGELES • CHICAGO • TORONTO

IN CONJUNCTION WITH:



AMERICAN AUCTIONEERS GROUP

1146 N Central Avenue # 535

Glendale, California 91202

Phone: 818-763-2021

Fax: 818-291-9495

WWW.AAGAUCTION.COM

WEBCAST AUCTION

BY ORDER OF OWNER: PRECISION AEROSPACE MANUFACTURER

AUCTION:

TUESDAY, OCTOBER 1, 11:00 AM PDT

INSPECTION:

MONDAY, SEPTEMBER 30, 8:00 AM - 4:00 PM PDT
AND MORNING OF SALE

INSPECTION LOCATION:

2220 S. ANNE ST., SANTA ANA, CA 92704

TERMS:

PAYMENTS ACCEPTED: CASH, CASHIER'S CHECK, BUSINESS CHECK WITH BANK LETTER OF GUARANTEE, OR BANK WIRE TRANSFER.

FULL PAYMENT MUST BE MADE NO LATER THAN 24 HOURS OF WINNING BID. PREPPING, LOADING & TRUCKING IS THE RESPONSIBILITY OF THE BUYER. ALL ITEMS ARE SOLD "AS IS, WHERE IS" WITHOUT ANY WARRANTY, EXPRESSED OR IMPLIED. NO EXCEPTIONS.

ONLINE REGISTRATION INFORMATION:

ONLINE BIDDERS MUST MAINTAIN A 25% DEPOSIT AT ALL TIMES DURING THE AUCTION SALE. BIDDING RESTRICTIONS APPLY. CHECK WEBSITE FOR FURTHER DETAILS.

REMOVAL:

TUESDAY, OCTOBER 2 – TUESDAY, OCTOBER 9 FROM 8:00 AM - 4:00 PM PDT. NO WEEKEND REMOVALS. NO EXCEPTIONS.

BUYER'S PREMIUM:

15% FOR ALL ONSITE PURCHASES

18% FOR ALL ONLINE PURCHASES.

ONLINE BIDDING PROVIDED BY:

BidSpotter.com

For Terms, Complete Catalog and
Online Bidding Information Visit:

www.mriauctions.com
or Call: 877-568-2121

MRI AUCTIONS

MACHINERY RESOURCES INTERNATIONAL, INC.

www.machineryresources.com

1650 Voyager Ave., Simi Valley, CA 93063
Tel: 877-568-2121 info@mriauctions.com

LOS ANGELES • CHICAGO • TORONTO

CNC LATHES



MORI SEIKI MODEL TL-5 WITH 8-STATION TOOL TURRET, HYDRAULIC TAILSTOCK, FANUC SYSTEM 3T CONTROL, MAYFRAN CHIP CONVEYOR, S/N 1337

1986 MORI SEIKI MODEL SL-6 WITH 18" 3-JAW HYDRAULIC CHUCK, 12-STATION TOOL TURRET, HYDRAULIC TAILSTOCK, FANUC MODEL SYSTEM 11TE, S/N 616

MORI SEIKI MODEL SL-25B5 WITH 3-JAW HYDRAULIC CHUCK, 10-STATION TOOL TURRET, HYDRAULIC TAILSTOCK, TOOL PRESETTER, FANUC MODEL 10T CNC CONTROL, S/N 919



MORI SEIKI MODEL SL-25B WITH 10" 3-JAW HYDRAULIC CHUCK, 10-STATION TOOL TURRET, HYDRAULIC TAILSTOCK, TOOL PRESETTER, FANUC MODEL MF-T6 CNC CONTROL, TURBO CHIP CONVEYOR, S/N 6462

MORI SEIKI MODEL AL-2ATM WITH 6" 3-JAW HYDRAULIC CHUCK, 12-STATION TOOL TURRET, HYDRAULIC TAILSTOCK, YASNAC CNC CONTROL, S/N 1598

MORI SEIKI MODEL SL-15 WITH 12-STATION TOOL TURRET, HYDRAULIC TAILSTOCK, MAYFRAN CHIP CONVEYOR, FANUC 10T CNC CONTROL, S/N 201



CNC LATHES



MORI SEIKI MODEL SL-15 WITH 12-STATION TOOL TURRET, HYDRAULIC TAILSTOCK, MAYFRAN CHIP CONVEYOR, FANUC 10T CNC CONTROL, S/N 202

MORI SEIKI MODEL SL-15M WITH 12-STATION TOOL TURRET, W/ (6) LIVE TOOL POSITIONS, HYDRAULIC TAILSTOCK, MAYFRAN CHIP CONVEYOR, FANUC 10T CNC CONTROL, S/N 47

MORI SEIKI MODEL SL-1 WITH 8-STATION TOOL TURRET, HYDRAULIC TAILSTOCK, FANUC SYSTEM 6T CNC CONTROL, S/N 1222

MORI SEIKI MODEL SL-3A WITH 8" HYDRAULIC CHUCK, 12-STATION TOOL TURRET, HYDRAULIC TAILSTOCK, FANUC SYSTEM 6T CNC CONTROL, S/N 3074



CNC VERTICAL MACHINING CENTERS

(2) MORI SEIKI MODEL MV-55/50 WITH 30-STATION AUTOMATIC TOOL CHANGER, V50 SPINDLE TAPER

(2) MORI SEIKI MODEL MV-JUNIOR WITH 20-STATION AUTOMATIC TOOL CHANGER, FANUC MODEL 10M CNC CONTROL, S/N 3684

(2) FADAL MODEL VMC 4020HT WITH 30-STATION AUTOMATIC TOOL CHANGER, HYDRO SWEEP CHIP CONVEYOR, FADAL 6" ROTARY TABLE, FADAL CNC CONTROL

1998 FADAL MODEL VMC 3016HT WITH 21-STATION AUTOMATIC TOOL CHANGER, CNC 88HS CNC CONTROL, S/N 9804918



VERTICAL MILLS

BRIDGEPORT MODEL J-HEAD 9" X 48", S/N 179947

BRIDGEPORT MODEL SERIES I WITH MITUTOYO DIGITAL READOUT, S/N 115474

REPUBLIC LAGUN, 2-HP VARIABLE SPEED DRIVE, W/ MITUTOYO 2-AXIS DIGITAL READOUT, S/N: SE-10000

ACRA MODEL A-2V WITH 3-HP VARIABLE SPEED DRIVE, R8 SPINDLE TAPER, POWER CROSS FEED, 3-AXIS DIGITAL READOUT



ENGINE LATHE



ACRA MODEL LS-400 ACRA TURN 16X40, GAP BED ENGINE LATHE, 16"/22" SWING X 40" DISTANCE BETWEEN CENTERS, 12-SPEED GEARED HEAD, 23 TO 1,800-RPM SPINDLE SPEED RANGE, 8" 3-JAW CHUCK, COMPOUND TOOL SLIDE, INCH/ METRIC THREADING, TAILSTOCK, S/N 8310119



COORDINATE MEASURING MACHINES

ZEISS MODEL MC-850 PC BASED CONTROL, W/ RENISHAW MODEL PH10T TOUCH PROBE, S/N 71756

TESA MODEL MAGNA SYSTEM 400, DIGITAL HEIGHT GAUGE

MITUTOYO MODEL F905, PC BASED CONTROL, RENISHAW MODEL PH1 TOUCH PROBE, S/N 8812736



GRINDERS

BOYAR-SCHULTZ MODEL 612, 6" X 12" HYDRAULIC RECIPROCATING SURFACE GRINDER, EQUIPPED W/ 6" X 18" PERMANENT MAGNETIC CHUCK, S/N 3946-H

CHEVALIER MODEL FSG-618M, 6" X 18" AUTOMATIC RECIPROCATING SURFACE GRINDER, S/N 14003

CRANES

APPROXIMATELY 3-TON CAPACITY X 14" COLUMN DIAMETER, FREE-STANDING JIB CRANE



MISCELLANEOUS

40' LONG SEA CONTAINER SHOP CONVERSION, W/ (3) ROLL-UP SIDE DOORS

KAESER MODEL AS 31 ROTARY SCREW AIR COMPRESSOR, W/ MODEL KRD SERIES REFRIGERATED AIR DRYER, S/N 1.7840.20010 1005

BALTEC MODEL RN 081, ORBITAL RIVETER, S/N 081 1427

HUSKY 3,000-PSI GAS POWERED PRESSURE WASHER

DAKE MODEL 25H, 25-TON MANUAL HYDRAULIC H-FRAME PRESS

CENTRAL MACHINERY 16" PEDESTAL DRILL PRESS

DEBURRING MACHINES

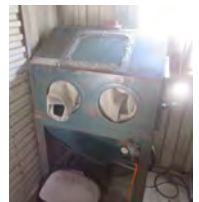
ROTARY TABLES

VICES

VARIOUS WORKTABLES AND BENCHES

BALDOR PEDESTAL TYPE DUAL END BUFFERS AND GRINDERS

BENCHTOP DRILL PRESS



BAND SAWS



SELECT MODEL 14VBS, 14" VERTICAL BAND SAW, 22" SQUARE TABLE, 6" VERTICAL CLEARANCE, EQUIPPED W/ BLADE CUTTER/ WELDER/GRINDER, S/N 35565

DAITO MODEL W250B HORIZONTAL BAND SAW, 10" X 12" CAPACITY, EQUIPPED W/ MANUAL CLAMPING AND HYDRAULIC FEED, S/N 46GU405B4



VEHICLES

TOYOTA MODEL 2FBCA10, ELECTRIC FORKLIFT, 2,000-LB CAPACITY, 36-VOLT, S/N 2FBCA10-10072

2005 FORD, GEORGETOWN MODEL 346S, CLASS A MOTOR HOME, TRITON V10 ENGINE, AUTOMATIC TRANSMISSION, 30,639-MILES INDICATED, S/N JYACJ07Y75A001830

CHEVROLET CORVETTE, CROSS-FIRE FUEL INJECTION V-8 ENGINE, AUTOMATIC TRANSMISSION

CARSON 20' TANDEM AXLE CAR HAULER TRAILER, FOLD-DOWN REAR AND SWING-AWAY SIDE DOORS, TAG-ALONG HITCH



COMPARATOR

STARRETT MODEL HB 400 14" OPTICAL COMPARATOR, 5" X 17" T-SLOTTED WORKTABLE, SURFACE AND PROFILE ILLUMINATION, 2-AXIS DIGITAL READOUT



CNC HORIZONTAL MACHINING CENTERS



2004 MORI SEIKI MODEL NH-4000 WITH 40-STATION AUTOMATIC TOOL CHANGER, MORI SEIKI MSG-501 CNC CONTROL, CHIP CONVEYOR, CHIP BLASTER COOLANT SYSTEM, S/N NH401DB0087

MORI SEIKI MODEL SH-50 WITH 42-STATION AUTOMATIC TOOL CHANGER, MORI SEIKI MODEL MSC-516 CNC CONTROL, CHIP CONVEYOR, COOLANT SYSTEM, S/N 14

1998 MORI SEIKI MODEL MH-500 WITH 120-POSITION AUTOMATIC TOOL CHANGER, CHIP CONVEYOR, COOLANT SYSTEM, MORI SEIKI MODEL MSC-516 CNC CONTROL, S/N 957

MORI SEIKI MODEL MH-50 WITH 6-POSITION PALLET SHUTTLE SYSTEM, 60-POSITION AUTOMATIC TOOL CHANGER, CHIP CONVEYOR, COOLANT SYSTEM, FANUC MODEL SERIES 15-M CNC CONTROL

FULL 4TH AXIS



**120 ATC
12 PALLET**

2008 OKUMA MODEL MACTURN-350-W WITH APPROXIMATELY 84-POSITION AUTOMATIC TOOL CHANGER, DUAL 8" OPPOSING CHUCKS, ENOMOTO CHIP CONVEYOR, COOLANT SYSTEM, OKUMA MODEL OSP-P200L CNC CONTROL, S/N 140120

LEBLOND MAKINO MODEL MC65-A120 WITH DUAL 20" SQUARE ROTARY PALLET STATION, 120-STATION AUTOMATIC TOOL CHANGER, MAYFRAN CHIP CONVEYOR, COOLANT SYSTEM, S/N A89-756

LEBLOND MAKINO MODEL MC65-A120 WITH DUAL 20" SQUARE ROTARY PALLET STATION, 120-STATION AUTOMATIC TOOL CHANGER, MAYFRAN CHIP CONVEYOR, COOLANT SYSTEM, S/N A91-850



8-AXIS MILLTURN LATHE



EDMS

2005 FANUC MODEL ROBOCUT ALPHA-IC SERIES, SINKER TYPE WIRE FEED EDM, FILTRATION AND COOLANT SYSTEM, FANUC SERIES 180IS-WB CNC CONTROL, S/N P05500068

SHIZUOKA/ELENIX, EDM VERTICAL MILLING MACHINE CONVERSION, ELENIX MODEL ST300C EDM DRILL UNIT, MOUNTED ON SHIZUOKA MODEL AN-S NC VERTICAL MILLING MACHINE

GROMAX MODEL V20-50A, SINKER TYPE EDM, 10" X 16 1/2" WORKTABLE, 3-AXIS DIGITAL READOUT



**CALL ALAN GOTTlieb IF YOU ARE
CLOSING YOUR SHOP OR HAVE
EQUIPMENT TO SELL 877-568-2121**



PUBLIC WEBCAST AUCTION

BY ORDER OF OWNER: PRECISION AEROSPACE MANUFACTURER

BID LIVE ONSITE OR BID ONLINE

PRECISION AEROSPACE MANUFACTURER

AUCTION: TUESDAY, OCTOBER 1, 11:00 AM PDT

INSPECTION: MONDAY, SEPTEMBER 30, 8:00 AM - 4:00 PM PDT AND MORNING OF SALE

INSPECTION LOCATION: 2220 S. ANNE ST., SANTA ANA, CA 92704

MISCELLANEOUS CONTINUED...

LISTA CABINETS

DOUBLE-DOOR STEEL STORAGE CABINETS

MBA BEAD BLAST CABINET

VARIOUS STYLE MATERIAL RACKS

QUANTITIES OF ROLLING
MATERIAL CARTS

VARIOUS GRANITE SURFACE PLATES

QUANTITIES OF MANUAL AND POWER
INSPECTION TOOLING

VARIOUS BENCHTOP SCALES

TAPE SHOOTERS AND INDUCTION
SEALERS

ASSORTED MACHINERY TOOLING

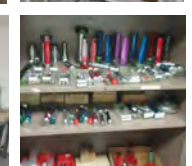
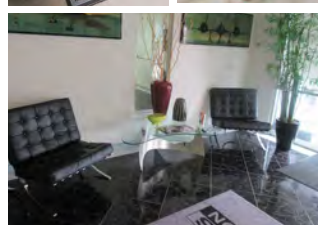
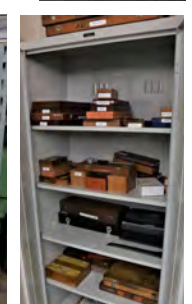
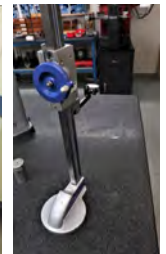
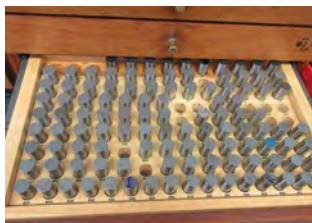
HAND AND POWER TOOLS

EXECUTIVE DESKS AND CHAIRS,
CONFERENCE TABLES, AND ASSORTED
OFFICE EQUIPMENT

VARIOUS COMPUTER TOWERS
WITH MONITOR AND KEYBOARDS

ASSORTED PRINTERS AND
FAX MACHINES

GLASS DISPLAY CASES



MACHINERY RESOURCES INTERNATIONAL, INC.

www.machineryresources.com

1650 Voyager Ave., Simi Valley, CA 93063

Tel: 877-568-2121 info@mriauctions.com

LOS ANGELES • CHICAGO • TORONTO

IN CONJUNCTION WITH:



AMERICAN AUCTIONEERS GROUP

1146 N Central Avenue # 535

Glendale, California 91202

Phone: 818-763-2021

Fax: 818-291-9495

WWW.AAGAUCTION.COM