

LIVE ONLINE AUCTION

INSPECT ONSITE

BY ORDER OF SPAN-O-MATIC INC.

BID LIVE ONLINE

PRISTINE LATE-MODEL AMADA FABRICATION FACILITY CLOSURE

LIVE ONLINE AUCTION BEGINS: TUESDAY, MAY 24 STARTING AT 10:00 AM PDT

INSPECTION: MONDAY, MAY 23, 8:00 AM - 4:00 PM PDT OR BY APPOINTMENT

INSPECTION LOCATION: 825 COLUMBIA ST., BREA, CA 92821



INCLUDING 2019 AMADA ENSIS 3015 FIBER LASER, 3000 WATTS; 2018 AMADA LCG3015 AJ FIBER LASER, 6,000 WATTS; 2000 AMADA COMA 567 55 TON TURRET PUNCH; (2) MURATA WIEDEMANN VECTRUM 3046A 33 TON TURRET PUNCHES; (4) DURMA CNC PRESS BRAKES UP TO 220 TONS, AS LATE AS 2016; (4) HAEGER 824 PLUS & 618-IL INSERTION PRESSES; (2) AMADA CSW-220 & CSH-220 CORNER NOTCHERS; AEM 50F37MD 36" BELT SANDER; FABRIVISION QC SCANNER; (6) MILLER DYNASTY 350 WELDERS; (3) MILLER INVISION 350 MPA WELDERS; STUD WELDERS; WELDING TABLES; MACHINE SHOP; 2019 KAESER CSD 75T COMPRESSORS; (2) 5,000 LB HYSTER FORKLIFTS; 2018 ISUZU FTR STAKE BED TRUCK (LOW MILEAGE), PLANT SUPPORT EQUIPMENT & MUCH MORE!



MACHINERY RESOURCES INTERNATIONAL, INC.

www.machineryresources.com

1650 Voyager Ave., Simi Valley, CA 93063

Tel: 877-568-2121 info@mriauctions.com

LOS ANGELES • SCOTTSDALE • CHICAGO • TORONTO

SALE IN
CONJUNCTION
WITH



**PERFECTION
Industrial Sales**

ph +1-847-545-6374 • fax +1-847-427-8884

www.perfectionindustrial.com

LIVE ONLINE AUCTION

BY ORDER OF SPAN-O-MATIC INC.; LATE-MODEL
AMADA FABRICATION FACILITY CLOSURE

LIVE ONLINE AUCTION BEGINS:

TUESDAY, MAY 24 STARTING AT 10:00 AM PDT

INSPECTION:

MONDAY, MAY 23, 8:00 AM - 4:00 PM PDT OR
BY APPOINTMENT

INSPECTION LOCATION:

825 COLUMBIA ST., BREA, CA 92821

TERMS:

ACH OR BANK WIRE TRANSFER ONLY.
FULL PAYMENT MUST BE MADE NO LATER THAN
24 HOURS OF WINNING BID. PREPPING, LOADING &
TRUCKING IS THE RESPONSIBILITY OF THE BUYER.
ALL ITEMS ARE SOLD "AS IS, WHERE IS" WITHOUT
ANY WARRANTY, EXPRESSED OR IMPLIED.
NO EXCEPTIONS.

ONLINE REGISTRATION INFORMATION:

ONLINE BIDDERS MUST MAINTAIN A 25% DEPOSIT
AT ALL TIMES DURING THE AUCTION SALE.
BIDDING RESTRICTIONS APPLY. CHECK WEBSITE
FOR FURTHER DETAILS.

REMOVAL:

REMOVAL DATES ARE WEDNESDAY, MAY 25 –
FRIDAY, JUNE 3, 8:00 AM – 4:00 PM PDT. **AMADA
LASERS TO BE REMOVED BY APPOINTMENT.**
NO ITEMS MAY BE REMOVED DURING THE AUCTION,
NO WEEKEND AND NO MEMORIAL DAY REMOVAL.
NO EXCEPTIONS.

BUYER'S PREMIUM:

18% FOR ALL ONLINE PURCHASES.

MACHINE SHOP

OKUMA MACHINE LATHE TYPE LS, 10"
CHUCK, TAILSTOCK, S/N 8684 NEW: 1965
BRIDGEPORT KNEE MILL, S/N J30945
TREE KNEE MILL MODEL 2UVR
SOLBERGA SENR7 DRILL PRESSES
CLEEREMAN DRILL
DOALL MODEL V-36 VERTICAL METAL
CUTTING BANDSAW
MACHINE VISES AND MANUAL ROTARYS
GRINDERS, DRILLS, END MILLS,
AND HARDWARE



ONLINE BIDDING PROVIDED BY:

BidSpotter

For Terms, Complete Catalog and
Online Bidding Information Visit:

www.mriauctions.com

or Call: 1-877-568-2121

MRI AUCTIONS

MACHINERY RESOURCES INTERNATIONAL, INC.

www.machineryresources.com

1650 Voyager Ave., Simi Valley, CA 93063
Tel: 877-568-2121 info@mriauctions.com

LOS ANGELES • SCOTTSDALE • CHICAGO • TORONTO

TURRET PUNCHES

AMADA COMA 567, 58 STATION TURRET, 55 TON, MAX. SHEET SIZE 60" X 144", 2 A/I, NEW: 2000!

MURATA WIEDEMANN VECTRUM 3046A, 33 TON, MAX. SHEET SIZE 49.1" X 157", AMADA/THICK TOOLING, 2 A/I, 40 STATION TURRET, FANUC 16P CONTROL, NEW: 2000

MURATA WIEDEMANN VECTRUM 3046A, 33 TON, MAX. SHEET SIZE 49.1" X 157", AMADA/THICK TOOLING, 2 A/I, 40 STATION TURRET, FANUC 18IP CONTROL, FIG-1250 LOAD/UNLOAD, NEW: 2000

CALL ALAN GOTTLIEB IF YOU ARE CLOSING YOUR SHOP OR HAVE EQUIPMENT TO SELL 1-877-568-2121

2000



55 TON

2000



33 TON



2000



33 TON

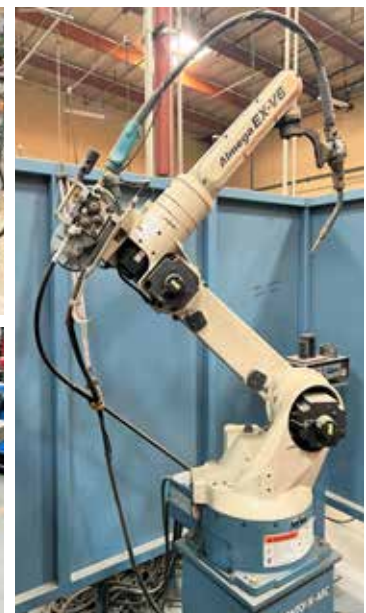
WELDING

6 MILLER DYNASTY 350 TIG WELDERS

MILLER AUTOLINE INVISION 350 MPA & 2 MILLER AUTOLINE INVISION 352 MPA

PLYMOVENT AND KEMPER SMOKE, DUST, AND FUME COLLECTORS WITH ARM HOSES

PALLETS OF WELDING AND MIG WIRE



UNUSED MATERIAL, SHEET STOCK, AND SCRAP OPPORTUNITY

PRESS BRAKES

DURMA CNCHPA37200 PRESS BRAKE, 12' OVERALL, 220 TONS, DELEM DA65 CONTROL, SINGLE AXIS BACK-GAUGE, NEW: 1999

DURMA AD-S 30175 CNC PRESS BRAKE, 10' OVERALL, 193 TONS, 6-AXIS PROGRAMMABLE BACK-GAUGE, EXTENDED OPEN HEIGHT, WILA HYDRAULIC CLAMPING, CROWNING, DELEM DA-66WE CONTROL, NEW: 2007

DURMA AD-S 30175 CNC PRESS BRAKE, 10' OVERALL, 193 TONS, Y1-Y2, 6-AXIS PROGRAMMABLE BACK-GAUGE, WILA HYDRAULIC CLAMPING, CROWNING, DELEM DA-66WE CONTROL, NEW: 2006

DURMA AD-S 30175 CNC PRESS BRAKE, 10' OVERALL, 193 TONS, Y1-Y2, 4-AXIS PROGRAMMABLE BACK-GAUGE, EXTENDED OPEN HEIGHT, WILA HYDRAULIC CLAMPING, CROWNING, DELEM CONTROL, NEW: 2016

2016

193 TON



2007



193 TON

2006

193 TON



220 TON



SMALLER PRESSES, BRAKES, NOTCHERS

AMADA CSH-220 NOTCHER PRESS NEW: 1977

AMADA CSW-220 NOTCHER PRESS NEW: 1978

AMADA SPH-30C BRAKE

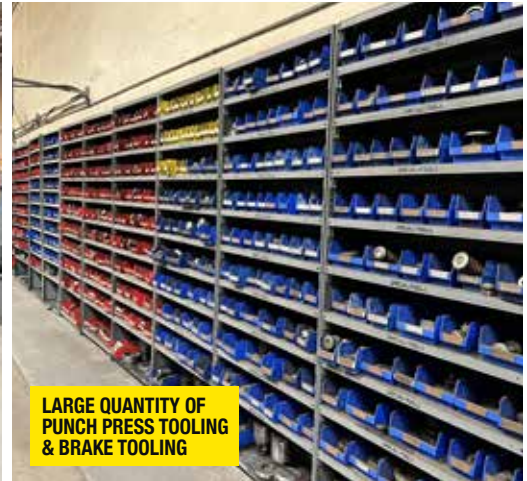
2 HAEGER 618 INSERTION PRESSES, NEW: 2001

2 HAEGER 824 INSERTION PRESSES

AEM MODEL 50F37MD TIME SAVER

TIMESAVER SPEEDBELT SANDER MODEL M-1 342

LARGE QTY OF PUNCH PRESS TOOLING & LARGE QTY OF BRAKE TOOLING



LARGE QUANTITY OF PUNCH PRESS TOOLING & BRAKE TOOLING



LASERS

AMADA ENSIS 3015 AJ FIBER LASER, 3,000 WATTS, 5' X 10' TABLE, NEW: 2019 EQUIPPED WITH: CL3015 CYCLE LOADER, EZ CUT NITROGEN GENERATOR PURCHASED NEW AND INSTALLED IN 2020, CUT TIME: 480 CUT HOURS

AMADA LCG3015 AJ FIBER LASER, 6,000 WATTS, 5' X 10' TABLE, NEW: 2018 EQUIPPED WITH: CL3015 CYCLE LOADER, RIGHT OUTPUT STATION, 10 SHELF TOWER, EZ CUT NITROGEN GENERATOR, CUT TIME: 4,900 HOURS

2019

ONLY 480 CUT HOURS

3000 WATTS

**OFFERS CONSIDERED
PRIOR TO AUCTION**

**OFFERS CONSIDERED
PRIOR TO AUCTION**



**OFFERS CONSIDERED
PRIOR TO AUCTION**

2018

**OFFERS CONSIDERED
PRIOR TO AUCTION**

6000 WATTS



**OFFERS CONSIDERED
PRIOR TO AUCTION**



**OFFERS CONSIDERED
PRIOR TO AUCTION**

LIVE ONLINE AUCTION

INSPECT ONSITE

BY ORDER OF SPAN-O-MATIC INC.

BID LIVE ONLINE

PRISTINE LATE-MODEL AMADA FABRICATION FACILITY CLOSURE

LIVE ONLINE AUCTION BEGINS: TUESDAY, MAY 24 STARTING AT 10:00 AM PDT

INSPECTION: MONDAY, MAY 23, 8:00 AM - 4:00 PM PDT OR BY APPOINTMENT

INSPECTION LOCATION: 825 COLUMBIA ST., BREA, CA 92821

SUPPORT EQUIPMENT

2018 ISUZU FTR 5.2L TURBO DIESEL 20' STAKE BED WORK TRUCK, VIN 54DK6S160JSG01760

1999 GMC W4500 5.7L V8 20' STAKE BED WORK TRUCK, VIN 4KDC4B1R4XJ002540

HYSTER LIFT TRUCK MODEL S50FT 4900 LB CAPACITY, SIDE SHIFT, PROPANE GAS POWERED, S/N F187V10510E

HYSTER LIFT TRUCK MODEL S50XM 4900 LB CAPACITY, SIDE SHIFT, PROPANE GAS POWERED, S/N D181V12907W

2010 KAESER AIR COMPRESSOR MODEL BSD 50T PART NUMBER: 100362.1, 50 HP, PSIG 125.0, CFM 236

FABRIVISION II 4' X 4' 8 CAMERAS

THREAD GAGES, GAGE PINS, GAGE BLOCKS, CALIPERS

RIDGID 1822-1 AUTO CHUCK PIPE THREADING MACHINE

POWER HAND TOOLS, DEWALT AND MILWAUKEE ANGLE GRINDERS & DRILLS

