

# ONLINE AUCTION

**INSPECT ONSITE**

BY ORDER OF OWNER: HIGH TECH CNC FABRICATION FACILITY

**BID ONLINE**

## LATE MODEL HIGH TECH CNC FABRICATION FACILITY

**ONLINE BIDDING CLOSES: TUESDAY, JUNE 29, LOTS START CLOSING AT 11:00 AM EDT**

**INSPECTION: MONDAY JUNE 28 FROM 8:00 AM-4:00 PM EDT**

**INSPECTION LOCATION: 2455 INNOVATION DRIVE, LONDON, ON N6M 0C8, CANADA**

**2017**



**4000 WATT FIBER LASER**

**2017**



**ONLY 635 LASER CUT HOURS**

**2017**



**2019**



**XRP 700 STORAGE SYSTEM**

**2019**



**XRP 700 STORAGE SYSTEM**

**2017 MAZAK OPTIPLEX 3015 FIBER LASER WITH ONLY 635 CUT HOURS, 2017 BAYKAL APhS-37200 200 TON 3700MM CNC PRESS BRAKE, (2) DIVERSATECH MDD 3 X 8 DOWN DRAFT TABLES, (2) 2019 KARDEX 21 FOOT HIGH STORAGE SYSTEMS, 2018 HYDMECH S-20 BANDSAW, VIPER 330-Z BANDSAW, FIRST MILLING MACHINE LC-185VS WITH R8 SPINDLE, NISSAN OPTIMA 50 LIFT 4400 LOAD CAP, LATE MODEL COMPRESSORS, DUST COLLECTORS, ASSOCIATED TOOLING, CARTS AND AUXILIARY EQUIPMENT**



**MACHINERY RESOURCES** INTERNATIONAL, INC.

[www.machineryresources.com](http://www.machineryresources.com)

1650 Voyager Ave., Simi Valley, CA 93063

Tel: 877-568-2121 [info@mriauctions.com](mailto:info@mriauctions.com)

LOS ANGELES • SCOTTSDALE • CHICAGO • TORONTO

**SALE IN  
CONJUNCTION  
WITH**



80 MIDWEST ROAD, UNIT 1

SCARBOROUGH, ONTARIO M1P 4R2

T: 416-366-2326 [info@platinumassets.com](mailto:info@platinumassets.com)



# ONLINE AUCTION

BY ORDER OF OWNER: HIGH TECH CNC FABRICATION FACILITY

## ONLINE BIDDING CLOSES:

TUESDAY, JUNE 29, LOTS START CLOSING AT 11:00 AM EDT

## INSPECTION:

MONDAY JUNE 28 FROM 8:00 AM-4:00 PM EDT

## INSPECTION LOCATION:

2455 INNOVATION DRIVE,  
LONDON, ONTARIO N6M 0C8, CANADA

## TERMS:

CASH, CASHIER'S CHECK, BUSINESS CHECK  
WITH BANK LETTER OF GUARANTEE,  
BANK WIRE TRANSFER.

FULL PAYMENT MUST BE MADE NO LATER THAN  
24 HOURS OF WINNING BID. PREPPING, LOADING &  
TRUCKING IS THE RESPONSIBILITY OF THE BUYER.  
ALL ITEMS ARE SOLD "AS IS, WHERE IS" WITHOUT  
ANY WARRANTY, EXPRESSED OR IMPLIED.  
NO EXCEPTIONS.

## ONLINE REGISTRATION INFORMATION:

ONLINE BIDDERS MUST MAINTAIN A 25% DEPOSIT  
AT ALL TIMES DURING THE AUCTION SALE.  
BIDDING RESTRICTIONS APPLY. CHECK WEBSITE  
FOR FURTHER DETAILS.

## REMOVAL:

REMOVAL DATES FROM 8:00 AM – 4:00 PM EDT.  
NO ITEMS MAY BE REMOVED DURING THE AUCTION,  
NO WEEKEND REMOVAL. NO EXCEPTIONS.

## BUYER'S PREMIUM:

18% FOR ALL ONLINE PURCHASES.

## ONLINE BIDDING PROVIDED BY:

**BidSpotter.com**

For Terms, Complete Catalog and  
Online Bidding Information Visit:

**www.mriauctions.com**

or Call: 1-877-568-2121



MACHINERY RESOURCES INTERNATIONAL, INC.

**www.machineryresources.com**

1650 Voyager Ave., Simi Valley, CA 93063  
Tel: 877-568-2121 info@mriauctions.com

LOS ANGELES • SCOTTSDALE • CHICAGO • TORONTO

## FIBER LASER

**2017**

2017, MAZAK, OPTIPLEX NEXUS  
3015, FIBER LASER, MAZATROL,  
PREVIEW 3 CNC CONTROL,  
STROKE (X,Y,Z) 122" X 62.2" X  
5.9", MAX WORK PIECE SIZE,  
120.1" X 60", MAX TABLE LOAD  
2050 LBS, MACHINE WEIGHT  
28,400 LBS., 460/3/60, 175 AMP,  
S/N 283773, YTTERBIUM,  
YLS-4000 LASER SYSTEM,  
S/N PL172626, IPG, LC 170.01-  
A.3.5/6, CHILLER, S/N PC1702463,  
ROBOVENT, MDC-4-1836,  
PLASER SERIES, FUME  
EXTRACTOR S/N 26-334



**ONLY 635 LASER CUT HOURS**

**2017**



**4000 WATT FIBER LASER**

**2017**



## TURRET MILL

FIRST, LC-185VS, 10" X  
50" TURRET MILL, POWER  
DRAW BAR, X-AXIS POWER  
FEED, 60-4500 RPM, 3 AXIS,  
TECH, DROII-2M, DIGITAL  
READOUT, R8 SPINDLE, 3 HP,  
S/N 707003108

**QTY OF SHELVING  
CABINETS, RAW  
MATERIAL, OFFICE,  
WORK BENCHES &  
MUCH MORE!**





## HIGH SPEED SHUTTLE

2019 KARDEX REMSTAR, SHUTTLE-XP-500-2450X864-US, HIGH SPEED SHUTTLE, (41) 96.4" X 34" TRAYS, 790 CUBIC FEET GROSS CUBE STORAGE, HEAVY CAPACITY TRAYS, 47 LBS PER SQ/FT, AVERAGE PRODUCT HEIGHT 9.05", TRAY SPACING OF 9.84", 211 RAIL POSITIONS EVERY 1", POTENTIAL FOR 422 RAIL LOCATIONS, C300 OVERHEAD MOUNTED CONTROLLER, POWERED SAFETY SHUTTER DOOR SYSTEM, CONFIRMATION STRIP, TRANSACTION INFORMATION CENTRE, 50MM LED SPOT, COMPUTER WORKSTATION, 21' 5.87" TALL, MULTITAP, 208-600V, 3 PHASE, S/N18006002/004

2019, KARDEX REMSTAR, SHUTTLE-XP-700-2450X864US, HIGH SPEED SHUTTLE, 753 CU. FT. GROSS CUBE STORAGE, (32) 96.4" X 33.6NS, C3000 OVERHEAD MOUNTED CONTROLLER, POWERED SAFETY SHUTTER DOOR SYSTEM, CONFIRMATION MIXED CAPACITY TRAYS, 10.05" AVERAGE PRODUCT HEIGHT, 10.84" TRAY SPACING, 201 RAIL POSITIONS EVERY 1", 402 POTENTIAL RAIL LOCATION STRIP, TRANSACTION INFORMATION CENTRE, 40 MM LED SPOT, 21' 5.87" TALL, S/N 19005443, 600/3/60

2019



XRP 700 STORAGE SYSTEM

2019



XRP 700 STORAGE SYSTEM

2019



XRP 700 STORAGE SYSTEM

2017



## CNC PRESS BRAKE

2017, BAYKAL, APHS-37200, 200 TON X 12', 5-AXIS CNC PRESS BRAKE, DELEM, DA-66T, CNC TOUCHSCREEN CONTROL, CNC CROWNING, WILA HYDRAULIC CLAMPING SYSTEM, FRASER, AKA5, LASER LIGHT GUARDS, 18.5 KW MOTOR, MACHINE WEIGHT 11,200 KG, DIMENSIONS (L,W,H) 187" X 73" X 105", 575/3/60, S/N 23791

## BANDSAWS

2018



2018, HYDMECH, S20 SERIES II, HORIZONTAL BANDSAW, 13" X 18" RECTANGLE, 13" ROUND, 12" 45 DEGREES, 90-370 FPM, 31" TABLE HEIGHT, 5,000 LBS., MAX TABLE LOAD, COOLANT, 2 HP, MITERING HEAD, 2,750 LBS., 600/3/60, S/N 60496281  
2016, VIPER, 330Z (W1318S), HORIZONTAL BANDSAW, 13" X 18" RECTANGLE, 12" ROUND, MITERING HEAD, POSITIVE STOP AT 45 DEGREES, 3 HP, COOLANT, 1,870 LBS, 575/3/60, S/N 16A08912

2016





## ENGINE LATHE

MICROWEILY, TY-2660, 26" X 60", GAP BED, ENGINE LATHE, 15-860 RPM, SWING OVER CROSS SLIDE 18", SWING IN GAP 33", LENGTH OF GAP IN FRONT OF FACE PLATE 7", CROSS SLIDE TRAVEL 15", 4" SPINDLE BORE, HEIDENHAIN, 2-AXIS, DIGITAL READOUT, 3-JAW CHUCK, STEADY REST, S/N BE8610-003



## DOWNDRAFT TABLES

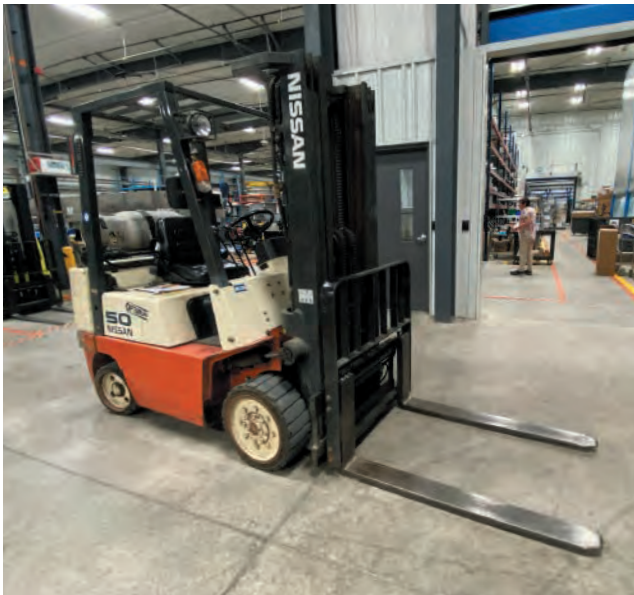
2017, DIVERSITECH, MDD-3X8, 3' X 8' DOWNDRAFT TABLE, 15 HP, 575/3/60, S/N S32025-1, S/N S32025-2

2017



## FORKLIFT

NISSAN, CPJ02A25PV, 4400 LBS, 3 STAGE, LPG FORKLIFT WITH SIDE SHIFT, 187" MAXIMUM LIFT, S/N CPJ02-9W0046



## SLAT CLEANER

SLAT CLEANER

## AIR COMPRESSOR

INGERSOLL RAND, UP6-TAS-125WDry, 10 HP, TANK MOUNTED, ROTARY SCREW AIR COMPRESSOR WITH AIR DRYER, 38 CFM, 575/3/60, S/N CBV511850



# ONLINE AUCTION

INSPECT ONSITE

BY ORDER OF OWNER: HIGH TECH CNC FABRICATION FACILITY

BID ONLINE

## ONLINE BIDDING CLOSES:

TUESDAY, JUNE 29, LOTS START CLOSING AT 11:00 AM EDT

INSPECTION: MONDAY JUNE 28 FROM 8:00 AM-4:00 PM EDT

INSPECTION LOCATION: 2455 INNOVATION DRIVE, LONDON, ON N6M 0C8, CANADA

2017 MAZAK OPTIPLEX 3015 FIBER LASER WITH ONLY 635 CUT HOURS, 2017 BAYKAL APHS-37200 200 TON 3700MM CNC PRESS BRAKE, (2) DIVERSATECH MDD 3 X 8 DOWN DRAFT TABLES, (2) 2019 KARDEX 21 FOOT HIGH STORAGE SYSTEMS, 2018 HYDMECH S-20 BANDSAW, VIPER 330-Z BANDSAW, FIRST MILLING MACHINE LC-185VS WITH R8 SPINDLE, NISSAN OPTIMA 50 LIFT 4400 LOAD CAP, LATE MODEL COMPRESSORS, DUST COLLECTORS, ASSOCIATED TOOLING, CARTS AND AUXILLERY EQUIPMENT

## TRANSFORMER

JVC, DH3-75C-51C, 600 VOLT PRIMARY TO 480/277 SECONDARY, 57KVA

